



*Together for a fair,  
sustainable and resilient city.  
A city where you have a  
chance of a good life,  
regardless of who you are  
and where you come from.*

19-05-2025  
Raymond Sparreboom  
Avans University of Applied Sciences

Beeld: Tilburg University



# Narrative

A photograph of a park scene. In the foreground, an older man and a woman are sitting on a metal bench, facing away from the camera. The man is wearing a light blue shirt and dark pants, and the woman is wearing a striped shirt and dark pants. In the background, there are trees, a paved path, and a few other people walking. The sky is blue and clear.

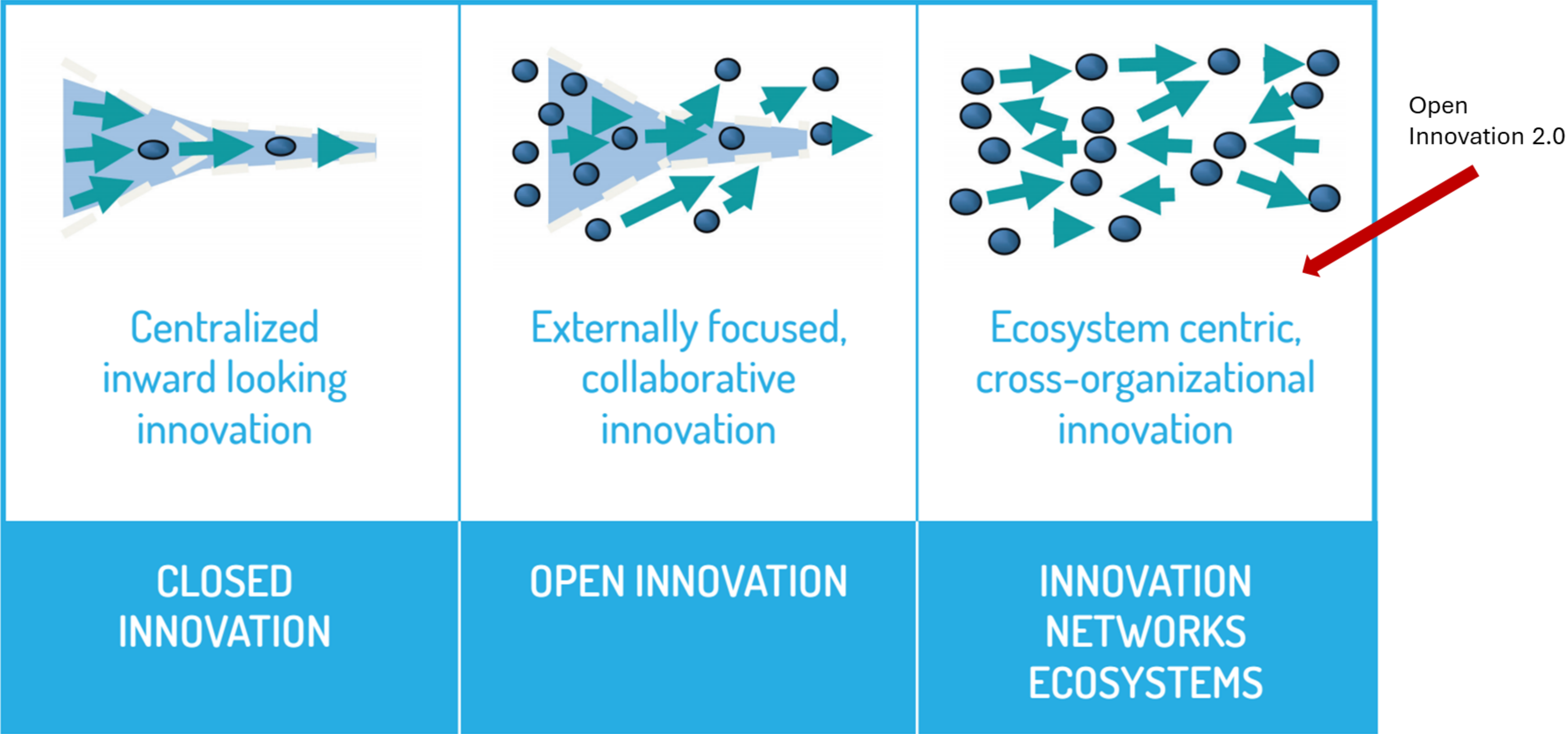
*Everyone has an equal chance of a healthy and good life.*

*Our heart lies with the citizens and their quality of life.*

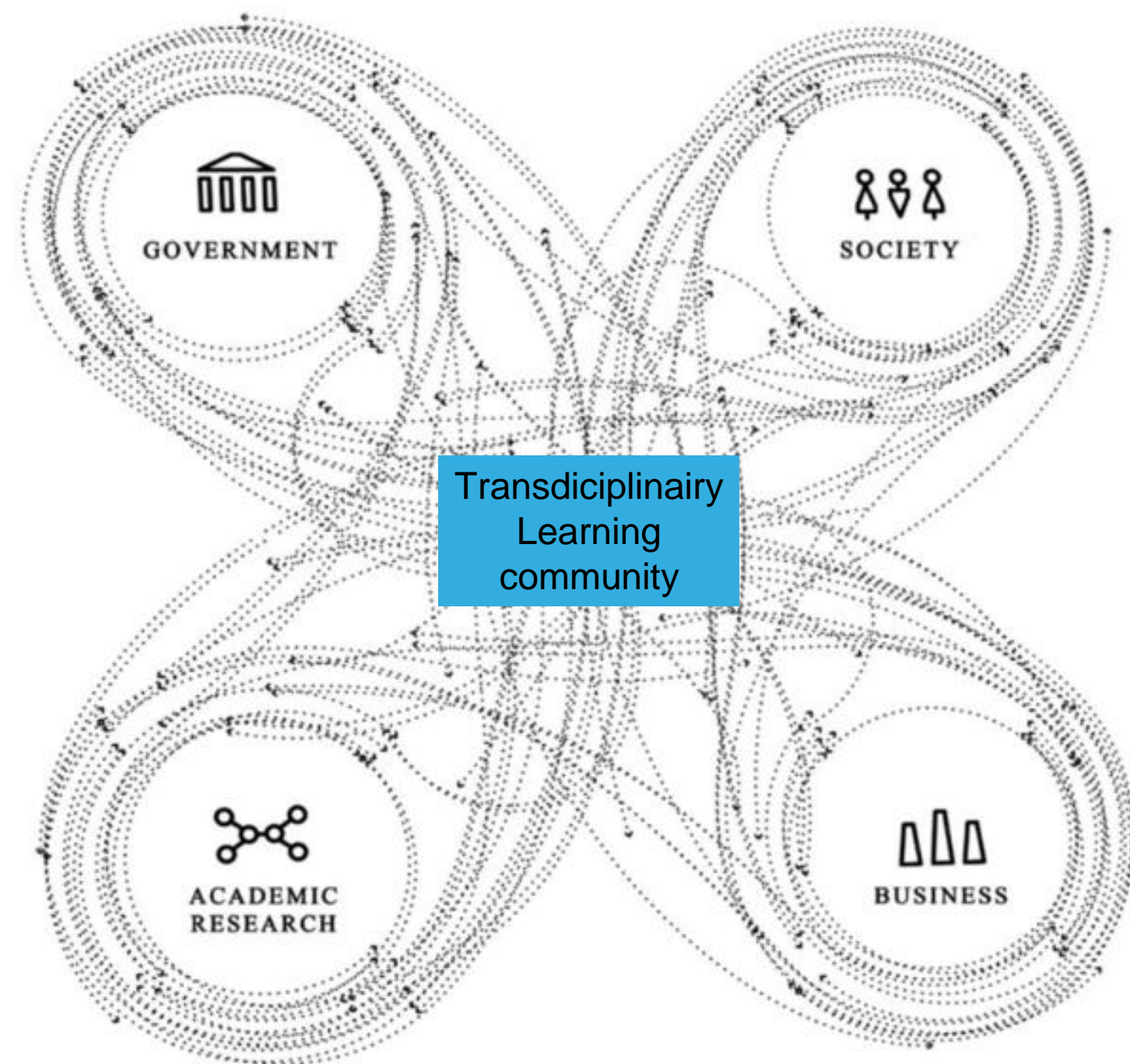
*Together we build on the broad prosperity of the city of Breda.*



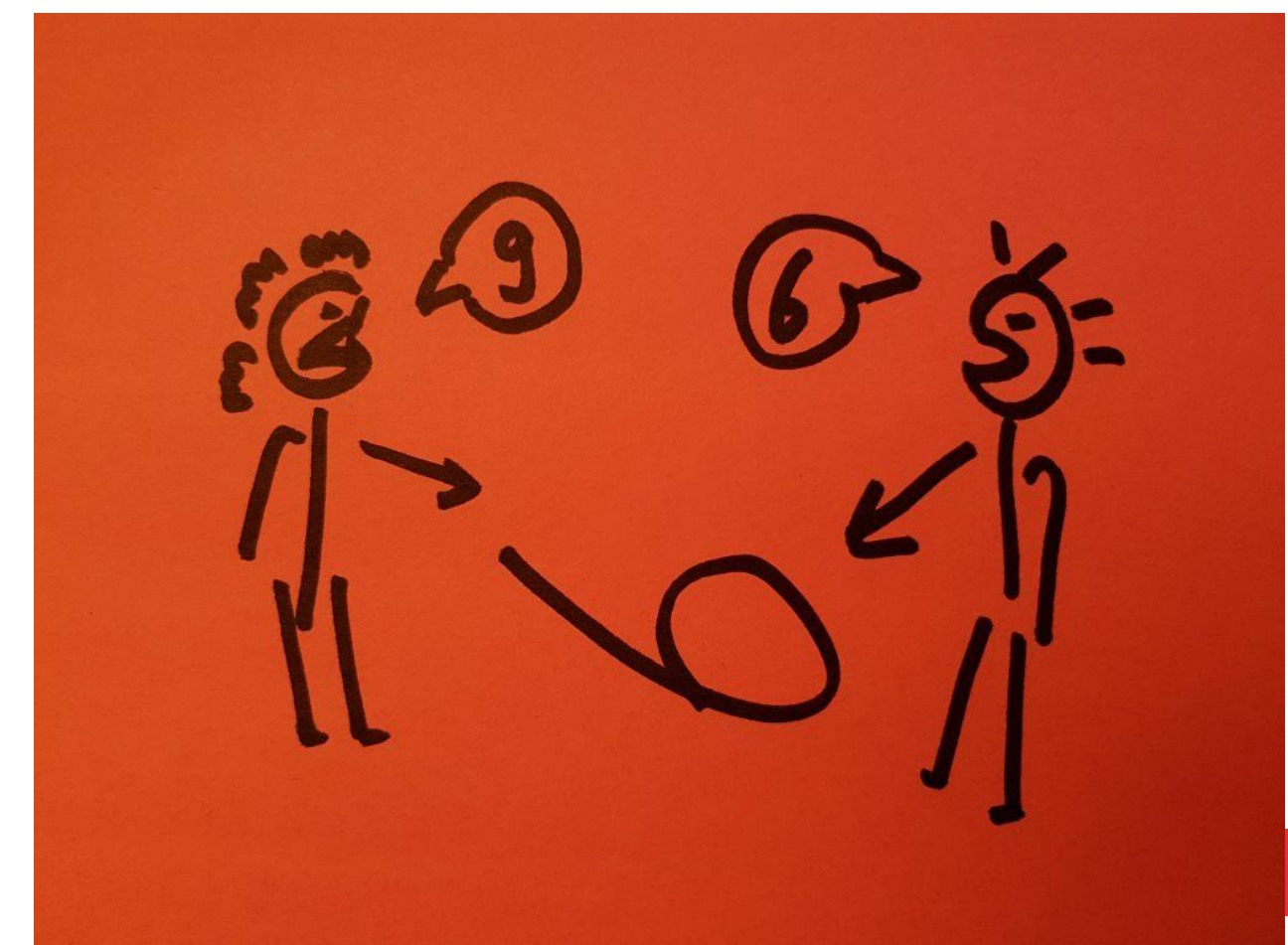
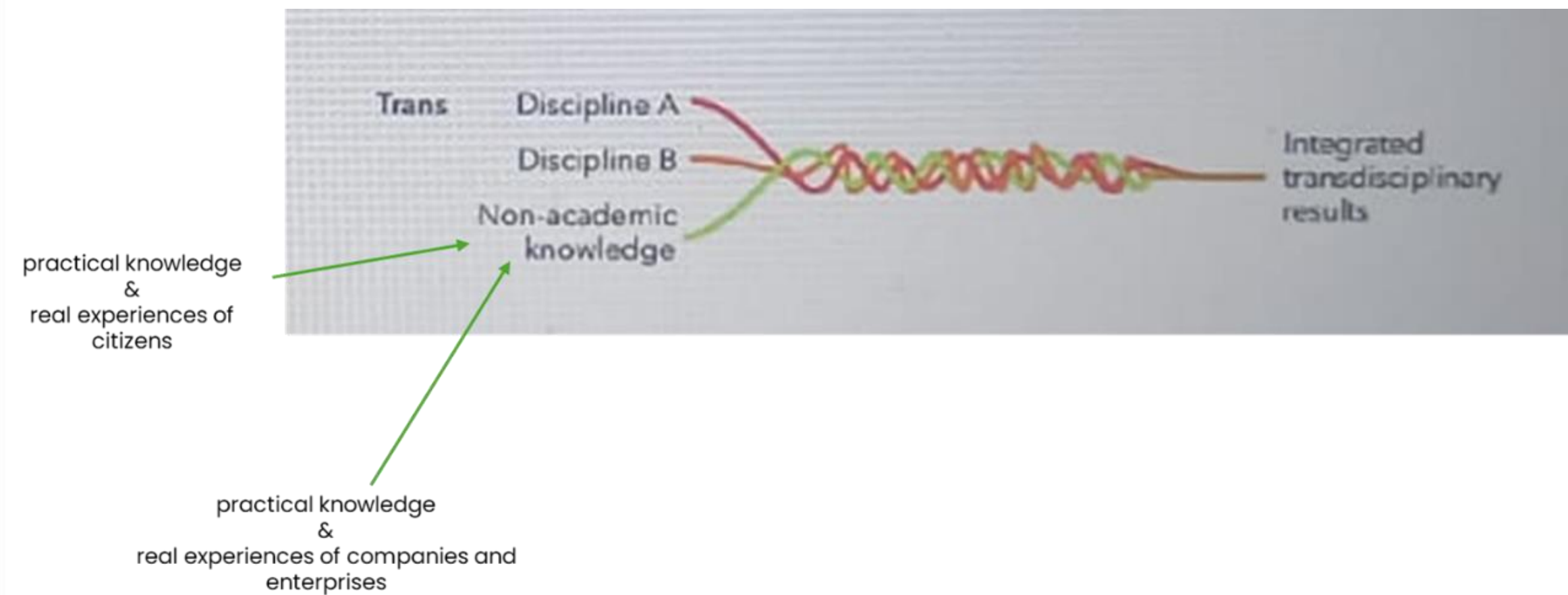
# Our methodology; Open Innovation 2.0



# Transdisciplinary collaboration



Bron: Taratori, Rodriguez-Fiscal, Pacho, Koutra, Pareja-Eastaway and Thomas, 2021

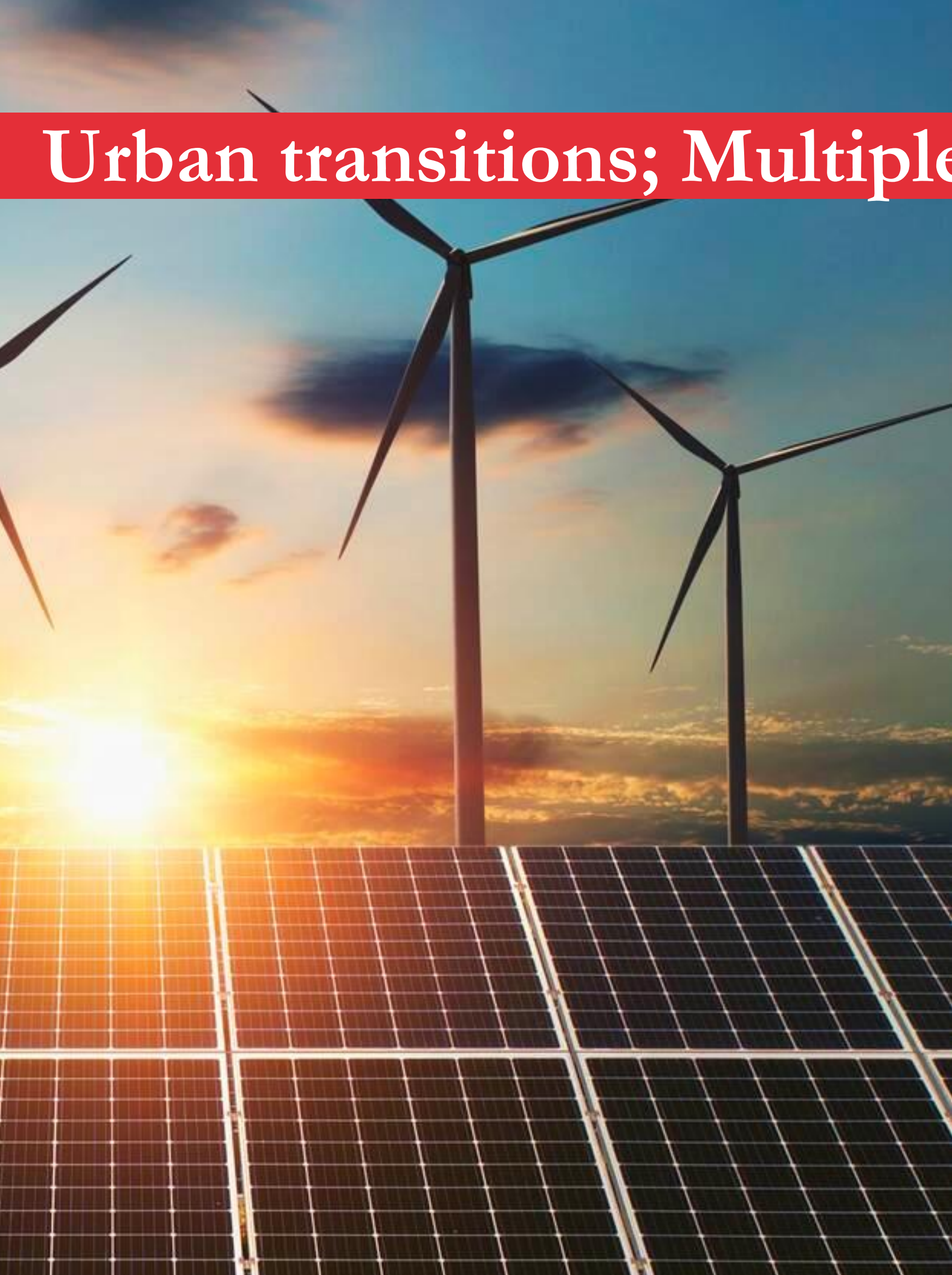


# Urban Transition Programs for tomorrow's city

1. The digital and human centered city
- 2. The sustainable, just and healthy city**
3. Impact entrepreneurship; The new standard



# Urban transitions; Multiple perspectives









# Urban site: Zandberg

'a citizens approach for biobased insulation of homes'

Wijkraad  
**ZandbergOost**



Locatie Zandberg

MNEXT





# General approach

## 1. Listening & learning:

- Information evenings for residents organized by the district council
- Increase outreach via communication via local newspaper, leaflets, personal emails
- Fostering data via surveys

## 2. Preparations for the District Energy Plan & select first pilot project

- District council + working group
- Advisor ULLB

## 3. Building the transdisciplinary learning community

- Select supplier and implementation partner
- Who to involve, at first hand, from education and research (VET/HEI)
- Determine interest by going door to door

## 4. Start pilot

- Selection pilot homes; trial in similar homes to stimulate/enable a collective approach
- Feasibility check by expert
- ....





# General approach

## 1. Listening & learning:

- Information evenings for residents organized by the district council
- Increase outreach via communication via local newspaper, leaflets, personal emails
- Fostering data via surveys

## 2. Preparations for the District Energy Plan & select first pilot project

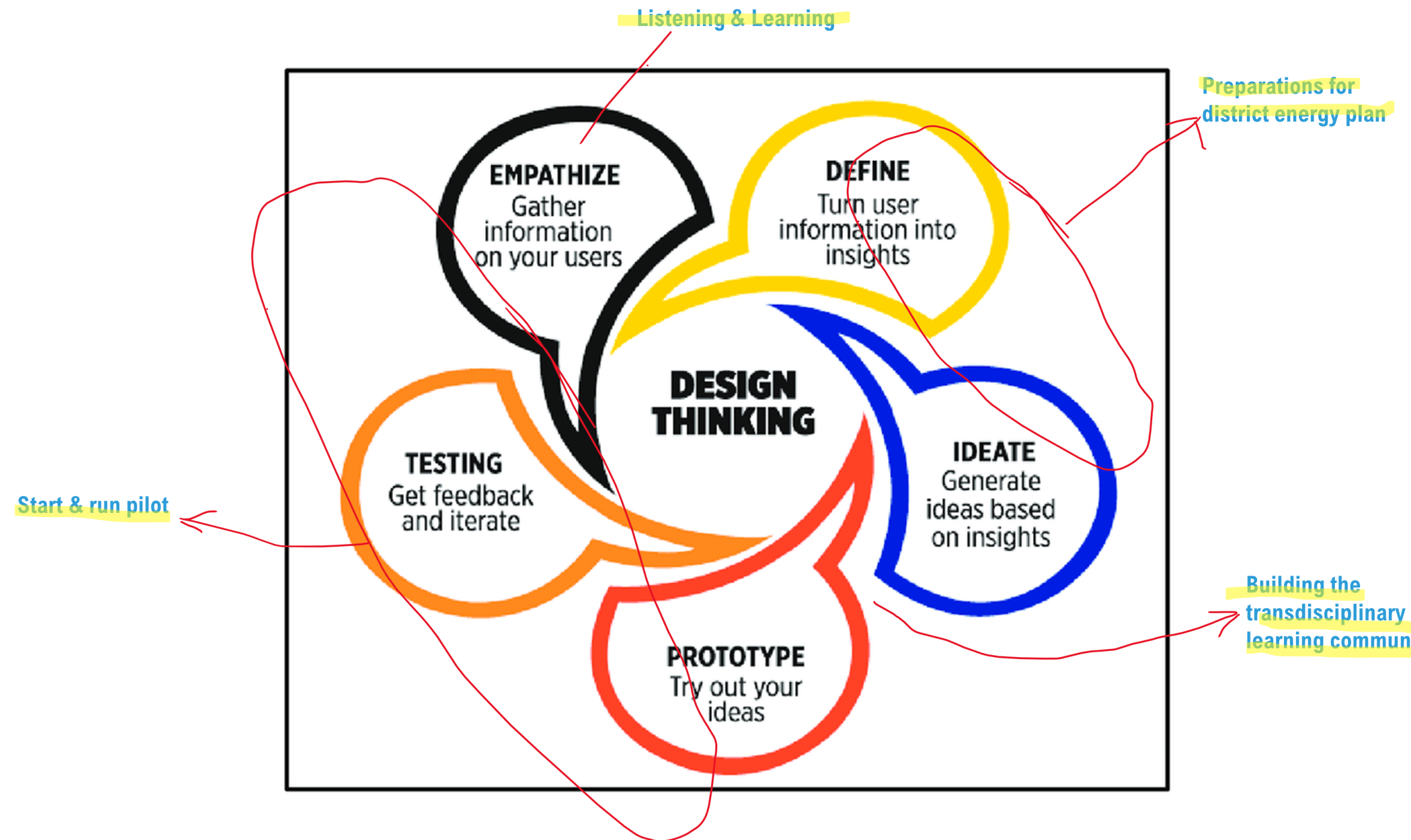
- District council + working group
- Advisor ULLB

## 3. Building the transdisciplinary learning community

- Select supplier and implementation partner
- Who to involve, at first hand, from education and research (VET/HEI)
- Determine interest by going door to door

## 4. Start pilot

- Selection pilot homes; trial in similar homes to stimulate/enable a collective approach
- Feasibility check by expert
- ....





# Pilot biobased floor insulation

The pilot will start with 1 + 3 pilot houses





# Pilot biobased floor insulation

## Q4 2023 - 2024

- Listening, learning, preparing energy plan

## 2025

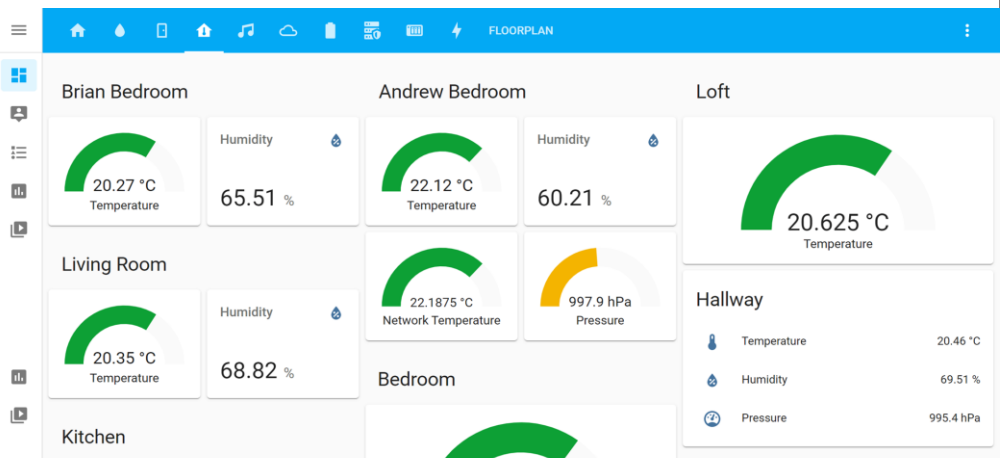
- **Q2/3 2025:**
  - Developing and describing the best construction solution(s) per pilot house
- **Q4 2025/Q1 2026:** Execution (constructor in collaboration with students/teachers)

## 2026

- **2026 – 2027:** Measuring and monitoring (research in collaboration with students/teachers, constructor and home-owners):
  - Energy efficiency
  - Indoor climate quality
  - Business model
  - User satisfaction
- **Q2 2026:** Foster interest for upscaling
- **Q3 2026:** Upscaling based on mid term evaluation



### LEVEL OF SATISFACTION





# Pilot biobased floor insulation

## Learning List

### Does our approach lead to real and lasting impact:

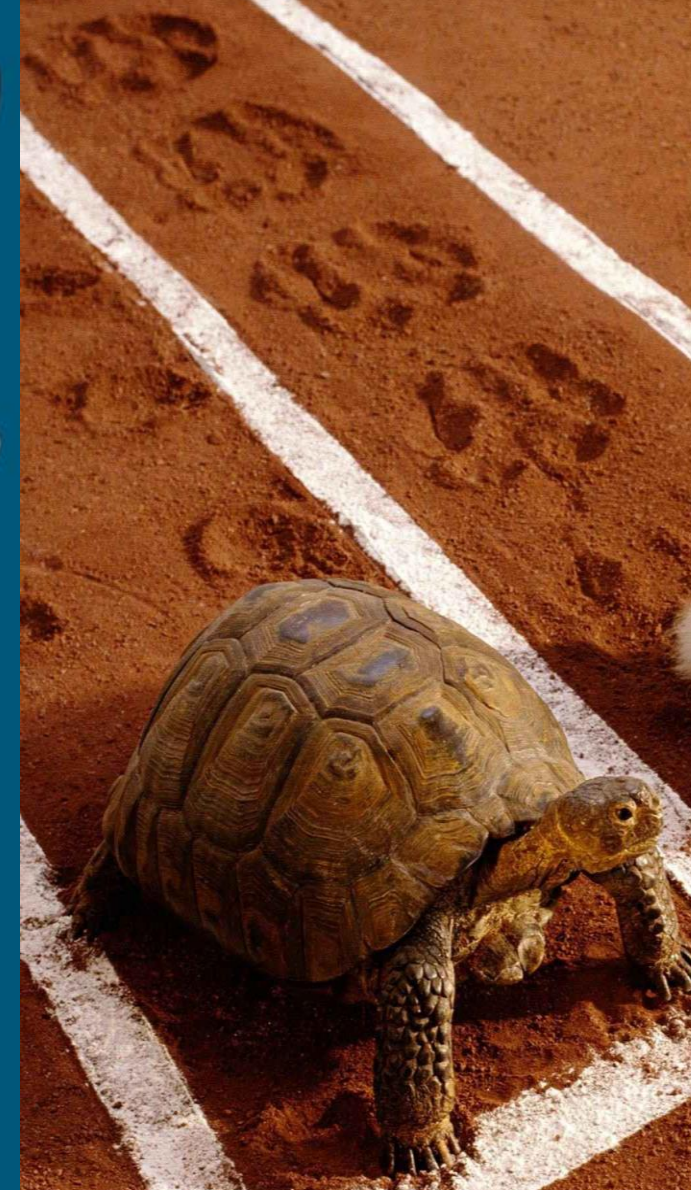
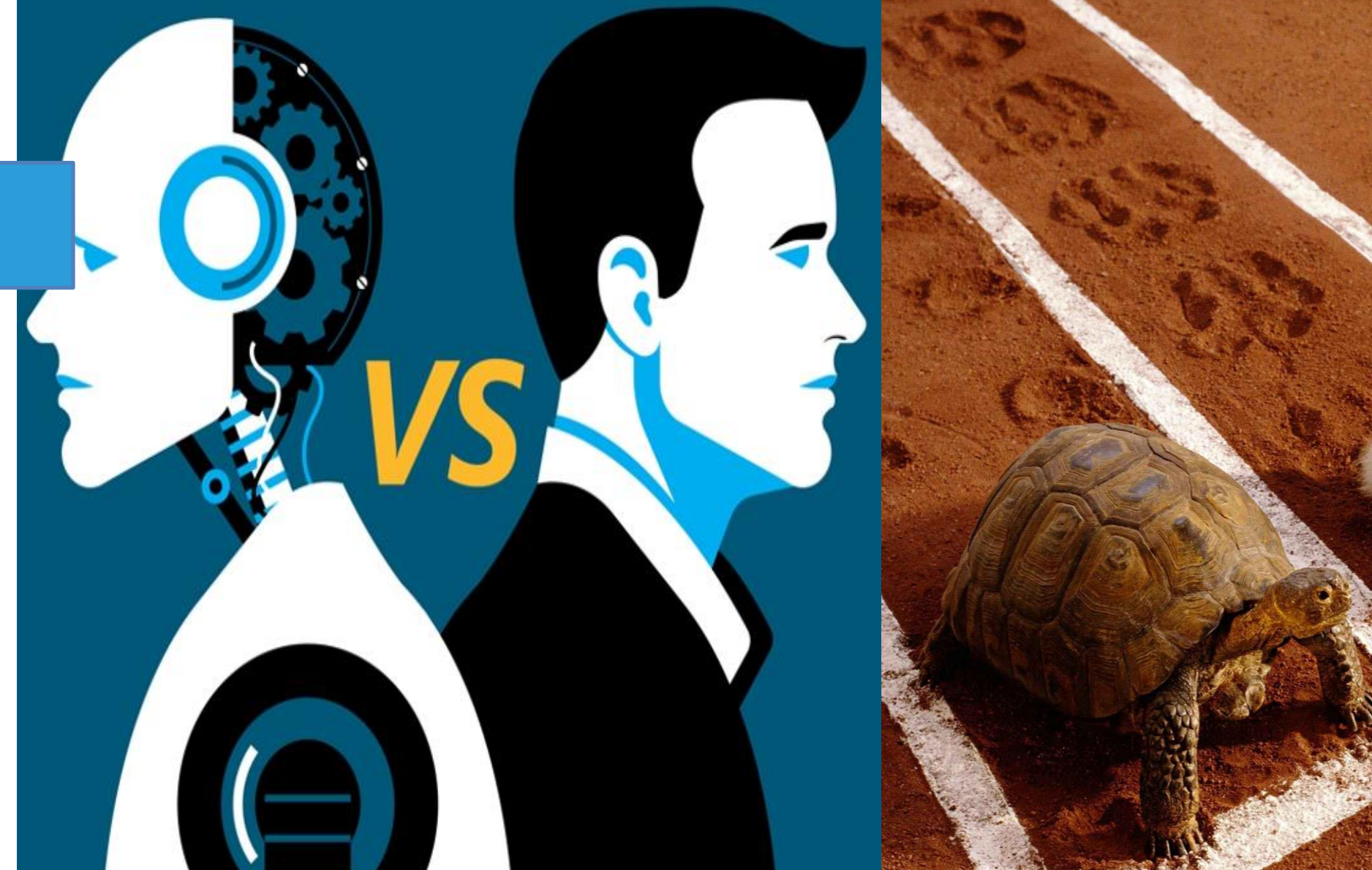
1. Does it lead to durable resilient transdisciplinary learning communities to independently push transitions?
2. Does it lead to a positive attitude towards the use of biobased materials (also healthy business case?)?
3. Effect on energy consumption and indoor climate quality?
4. Does it contribute positively to the education and training of our young professionals, our future workforce?





# Reflections

- Integration with education.
- Difference in thinking and doing between professionals and end users; **'System world vs real world'**
- Timing is key: when to speed up and when to slow down? Gain trust.
- As difficult as it may be sometimes, leave the end user in charge.
- Transdisciplinary collaboration = another role for the professional.
- Technological innovation and social innovation are only successful if there is also economic innovation; is there a realistic business model?





# To conclude: Our main roles in transdisciplinary learning communities

## **knowledge broker /bridge builder**

Independent advisor  
Monitoring (local) political changes,  
representing the interests of residents,  
bridging the differences,  
providing and combining knowledge,  
providing manpower,  
...

## **Enabler**

Empower citizens to work  
with other stakeholders, into  
independent and resilient  
learning communities  
...



[illegible]