

MNEXT

# Relevance of joining a Learning Community?

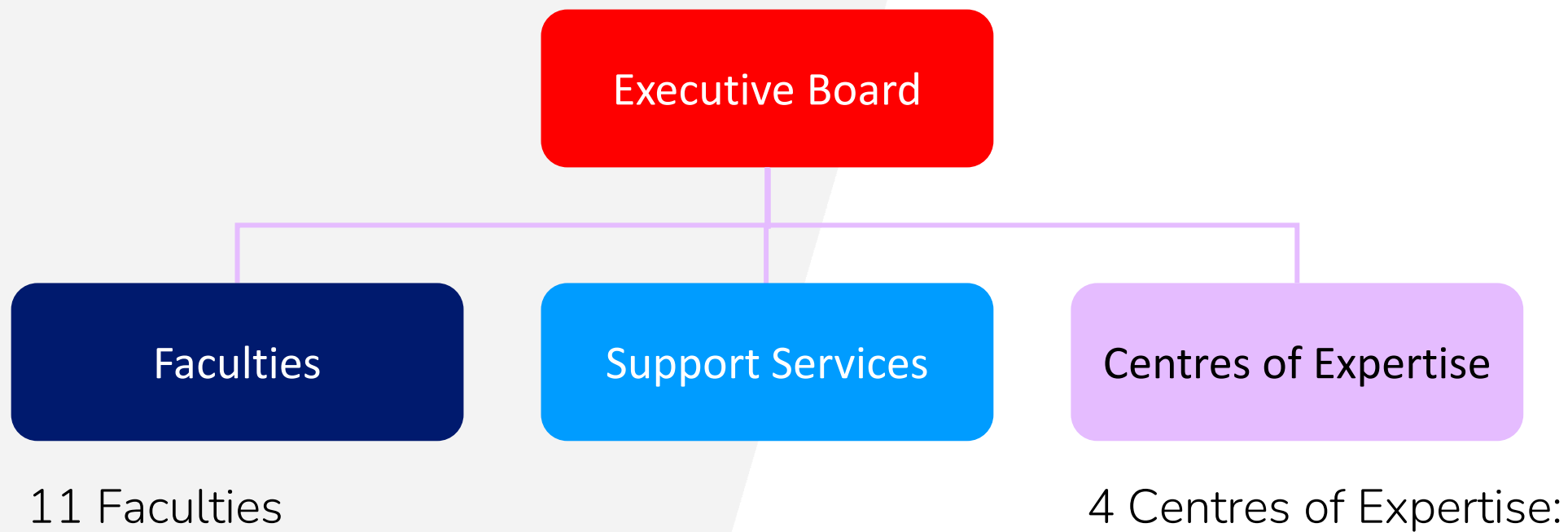
An Avans UAS Perspective



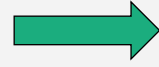
## Avans University of Applied Sciences

- **Students:** +/- 30.000 (December 2024)
- **Campuses:** Breda – 's-Hertogenbosch – Tilburg - Roosendaal
- **Programs:** 58 degrees in 11 faculties
- **Employees:** +/- 3.600 staff members
- **Research:** 37 research groups

# AVANS ORGANIZATION CHART



## Educational Institute



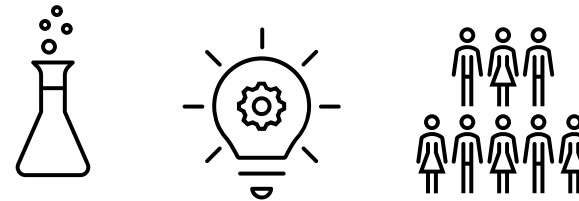
## Knowledge Institute



Goal: Transfer knowledge to students

Knowledge driven by  
**educational objectives**

How: providing education  
(transmission of **existing**  
knowledge)



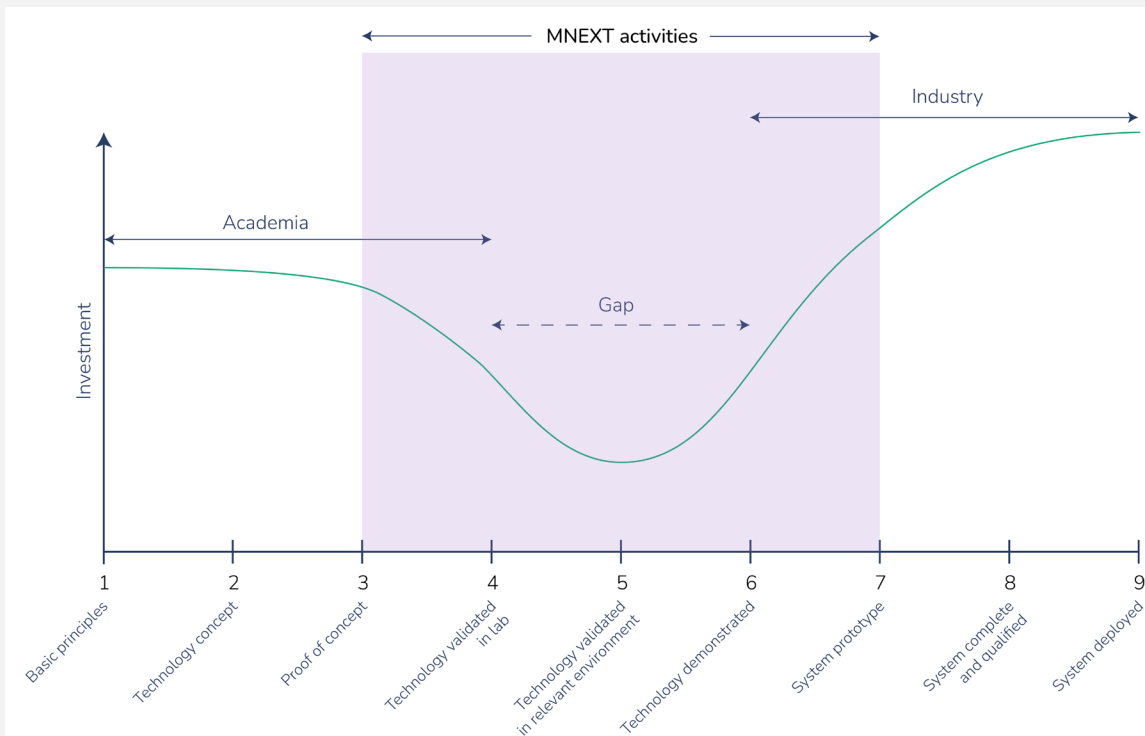
Goal: Develop and disseminate knowledge

Relevant knowledge driven by  
**societal challenges**

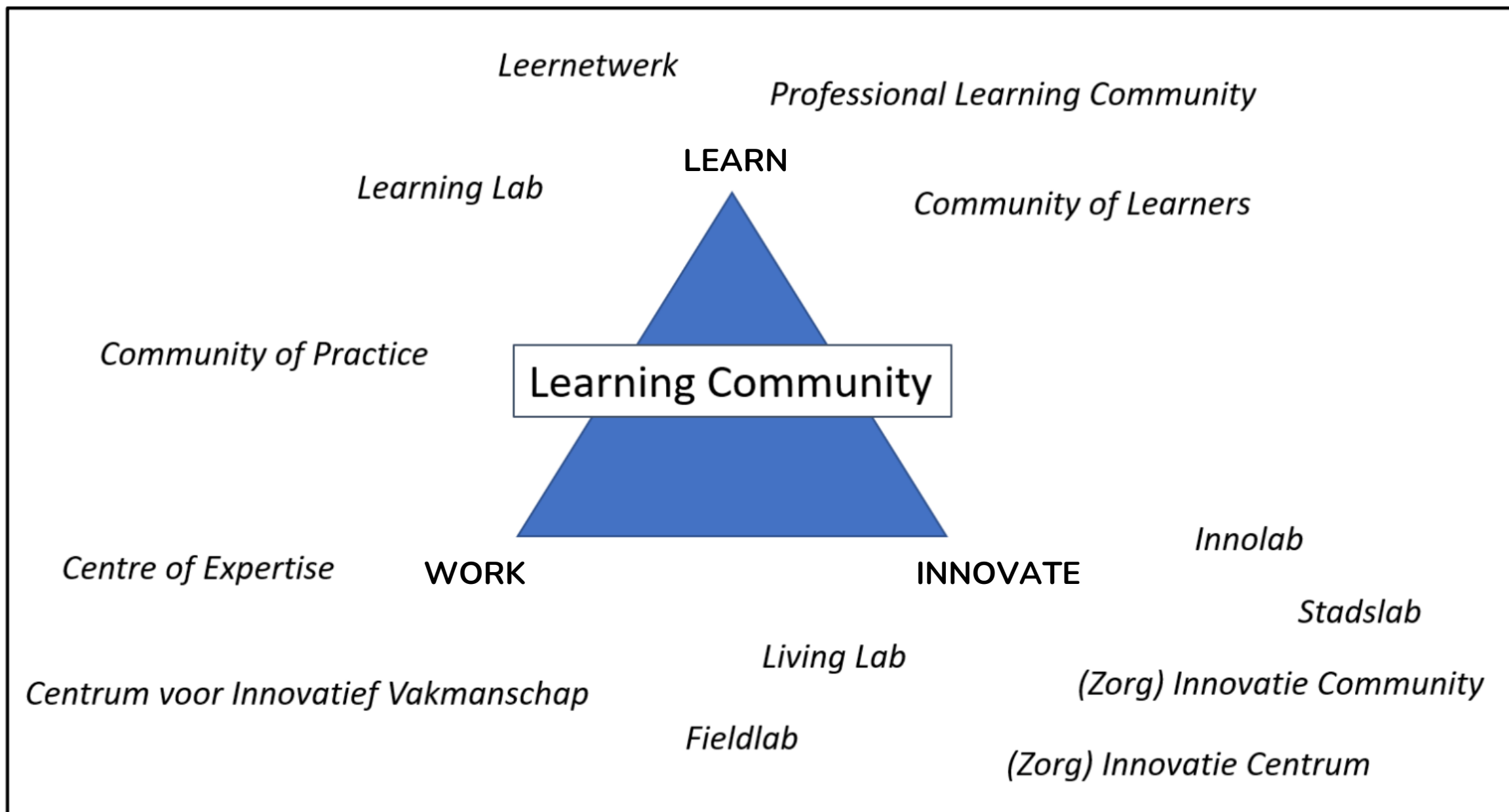
How: new insights by research in  
**collaboration** with external parties

Offer education **and** produces and  
shares new knowledge

# APPLIED RESEARCH



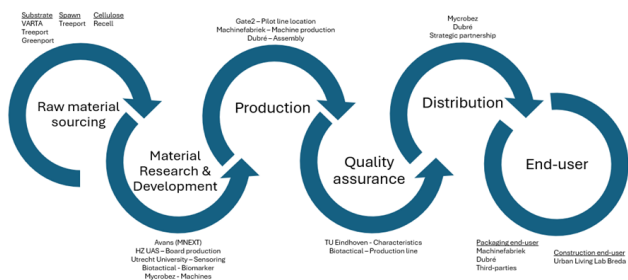
- 4 Centres of Expertise with each its own focus on societal challenges
- Different perspectives essential
- In collaboration with industry
- Changing people and systems



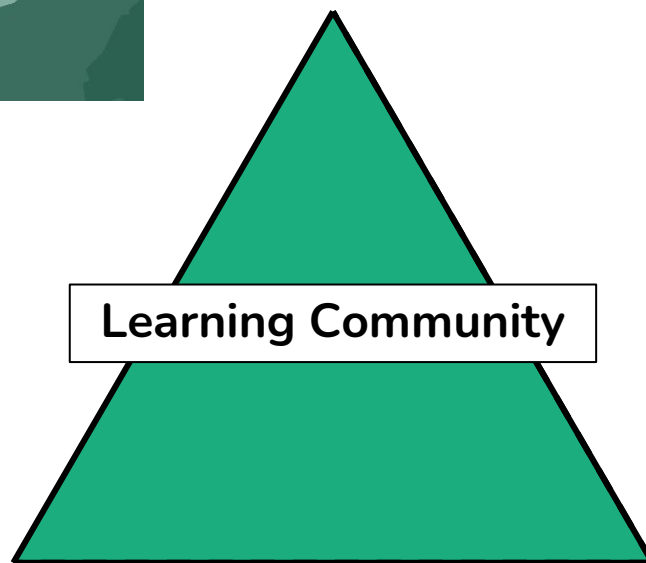


Project: Smart Energy Hubs in Business Parks

AutoMyc: automated production of mycelium biocomposite for standardization and scalability



WORK



LEARN

Learning Community

Community with vocational education on research themes



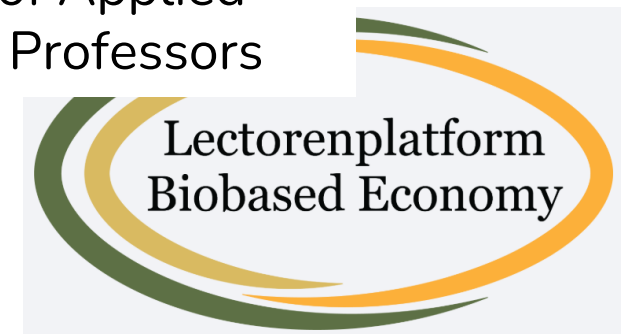
Interns and graduates working on research projects

INNOVATE

Living Ecosystem Universities of Applied Sciences



Platform of Applied Research Professors





## Relevance of joining a Learning Community?

**Yes**, that is what we do!

But with challenges:

- How to connect with education on a structural basis?
- Balance between learn, work and innovate
- How to keep a broader perspective while doing in-depth technical research?
- How to keep the community alive after a project finishes?

