

Generative AI (GenAI) at WUR

Prof. dr. ir. Arthur Mol

Rector Magnificus Wageningen University & Research



General statement on GenAI

- Focus on responsible use of GenAI
- We offer advice and information to our students, teachers, researchers and other staff
- We set restrictions on use in exams and publications
- We exchange and discuss practices within and between NL universities

Generative Artificial Intelligence (AI) at WUR

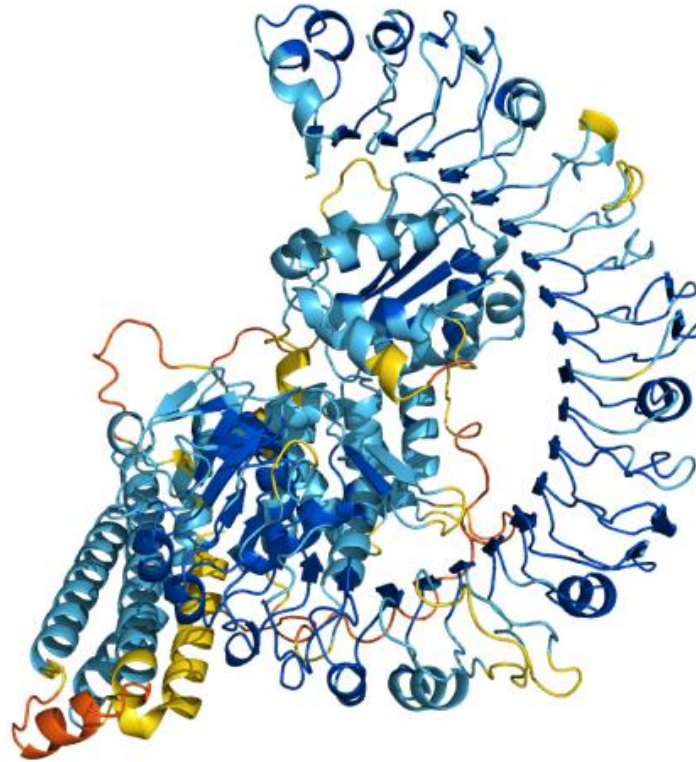
The use of Generative Artificial Intelligence tools in everyday work is on the rise. WUR has therefore prepared a short statement for staff and students as a first guideline.

We encourage lecturers, researchers, PhD/EngD candidates, students (including professional learners) and support staff at WUR to use generative AI (GenAI) methods responsibly. This means using GenAI legally, ethically, and in transparent manner. GenAI methods should enhance the quality of our work, while protecting privacy, boosting creativity, and supporting learning. To facilitate this, Wageningen University & Research (WUR) provided [information for students](#) on responsible use of (generative) AI tools while information for lecturers, researchers, PhD/EngD candidates and support staff is available at a [joint intranet page](#).

GenAI methods that support high-cognitive tasks such as data analysis, data visualization, computer programming, graphic design and generation of scientific figures are now increasingly becoming available. Particularly those that produce and analyse text based on large language models can be powerful multipurpose tools (like getting help with an administrative part of our job, thinking out of the box or answering a question on a (new) subject matter). In this sense GenAI methods offer exciting new possibilities for research and education at WUR.

As generative AI has rapidly developed, we do not yet have a final vision yet or answer on how it will affect our education and research activities. We will further develop a vision in a continuous dialogue with WUR staff and students and in alignment with the other Dutch universities.

Generative AI in education at WUR



Support education

- Student support pages, e.g.:
 - Do not use AI as a replacement of skills
 - Think of the limitations
 - Reference the AI you're using
- Workshops for teachers, e.g.:
 - Adjusting assignments to a world with AI
 - How to discuss the use of AI with students
 - How AI can be used in (preparing) education
- Advice to individual teachers
- Collecting and sharing best practices

Rules and regulations (Examining boards)

"Any use of artificial intelligence (AI) to create ready-made content of an assignment is considered an irregularity that may lead to suspicion of fraud, unless the use of AI is explicitly allowed in the assignment description."

In other words:

- AI may be used, but not to create complete texts in the assignment
- Examiners may set other rules and conditions per assignment.
- Violation is considered fraud

But:

- Difficult to detect
- Different opinions/practices among teachers

Examples: what do we allow/recommend?

- Ask AI to help find relevant scientific papers
 - Elicit (<https://elicit.org/>)
 - ResearchRabbit (<https://researchrabbit.ai/>)
- Use AI to write simple scripts to speed up (but not replace) data processing
 - ChatGPT (<https://chat.openai.com/>)
- Use AI to improve spelling / grammar
 - Grammarly (<https://app.grammarly.com/>)
 - Quillbot (<https://quillbot.com/grammar-check>)

Elicit



ResearchRabbit



ChatGPT



grammarly



QuillBot

(Generative-)AI in research at WUR



What we see:

- Since introduction ChatGPT (Nov. 2022) use of (generative-) AI accelerated;
- Major promises and discoveries of AI use in life sciences (e.g. Alphafold);
- Threat of lagging behind other global players is significant.
- Current AI applications in research conditioned by private agendas & tools (e.g. ChatGPT)*
- Risks for research integrity (e.g. liability and reproducibility)
- All universities pose question: How to deal with GenAI in research?

What we have / do @WUR:

- General statement on generative AI use
- Vibrant community of researchers developing and using AI;
- AI Taskforce and a steering committee installed, Legal experts included
- Strategic research programmes on development and use of AI
- Rules and guidelines for AI use in (PhD) research under construction.

What we need:

@WUR

- Dedicated and systemic WUR policy on AI use (aligned with integrity policies)
- AI support office @WUR to facilitate and advice on uptake of AI in research
- Training/assistance researchers on development and use of AI @WUR

Beyond WUR

- National and EU agreement on AI use in research practices
- Organized input universities in development / implementation of EU AI ACT
- Joint development reliable and open LLM and / or scientific AI platform