

---

# Benefiting from the learning and teaching behaviours seen in the pandemic

Lawrie Phipps





---

# Jisc

- Senior research lead
  - R&D Team
  - All aspects of post 16 education
- Teaching, Research and Admin Systems
- Currently focused on digital behaviours of staff and students

# Keele University

- Professor of digital ed, leadership and practice
- Digital Capabilities of students
- Fieldwork and digital support
- Global Challenge Programme
- *Climate Leadership / Science MSc at Virginia Tech*



Today I want to focus on two areas

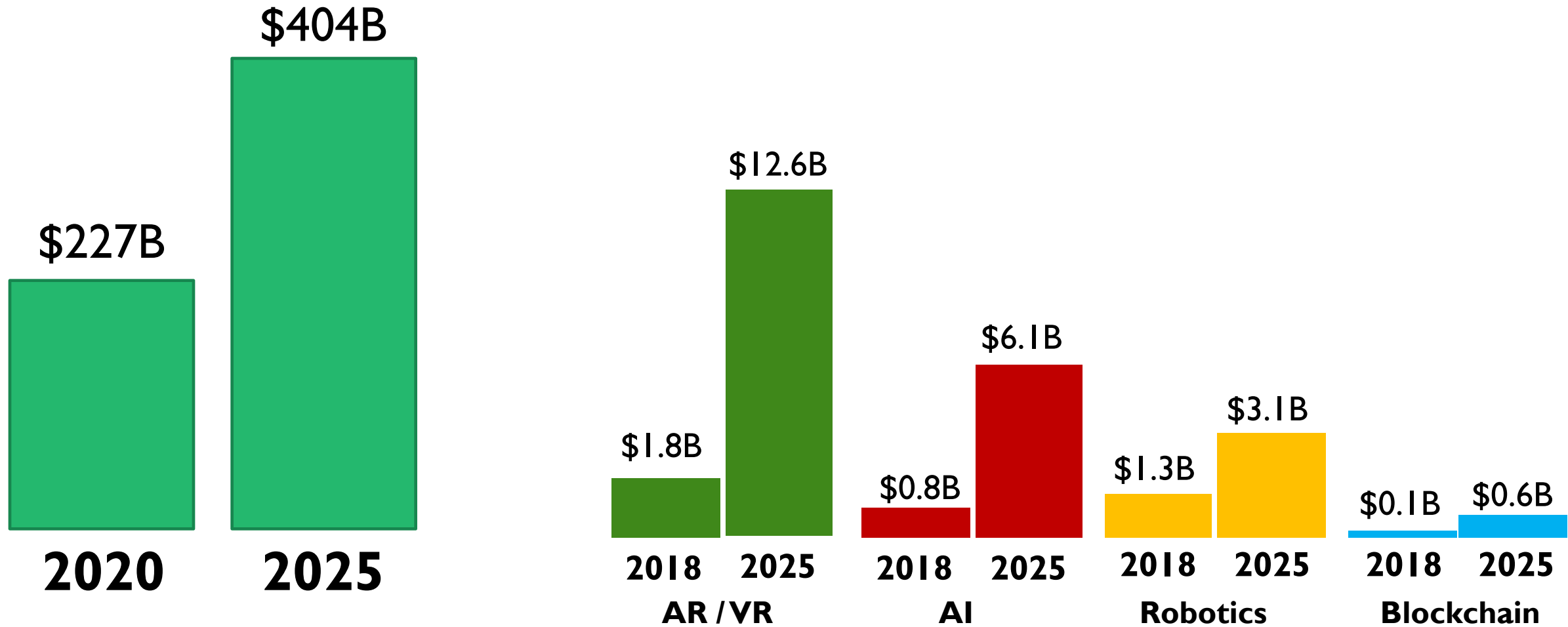
- Edtech Trends and what those trends might look like in higher education
- What we are learning from the pandemic



# The Trajectory of Technology in Teaching and Assessment



## Growth in expenditure on EdTech



---

# EdTech is Big Business

...and the focus is on a return on investment

# Higher Education Business and operating models

Gartner

HolonIQ

Forrester

WonkHE

AdvanceHE

- Internationalisation
- Enrollment and Student Records Systems
- Alternative Credentialing
- Lifelong learning and apprenticeships
- Staff retention and training
- Cyber Security
- Data security
- Permanent Digital Transformation

# Higher Education Learning and Teaching

Gartner

HolonIQ

Forrester

WonkHE

AdvanceHE

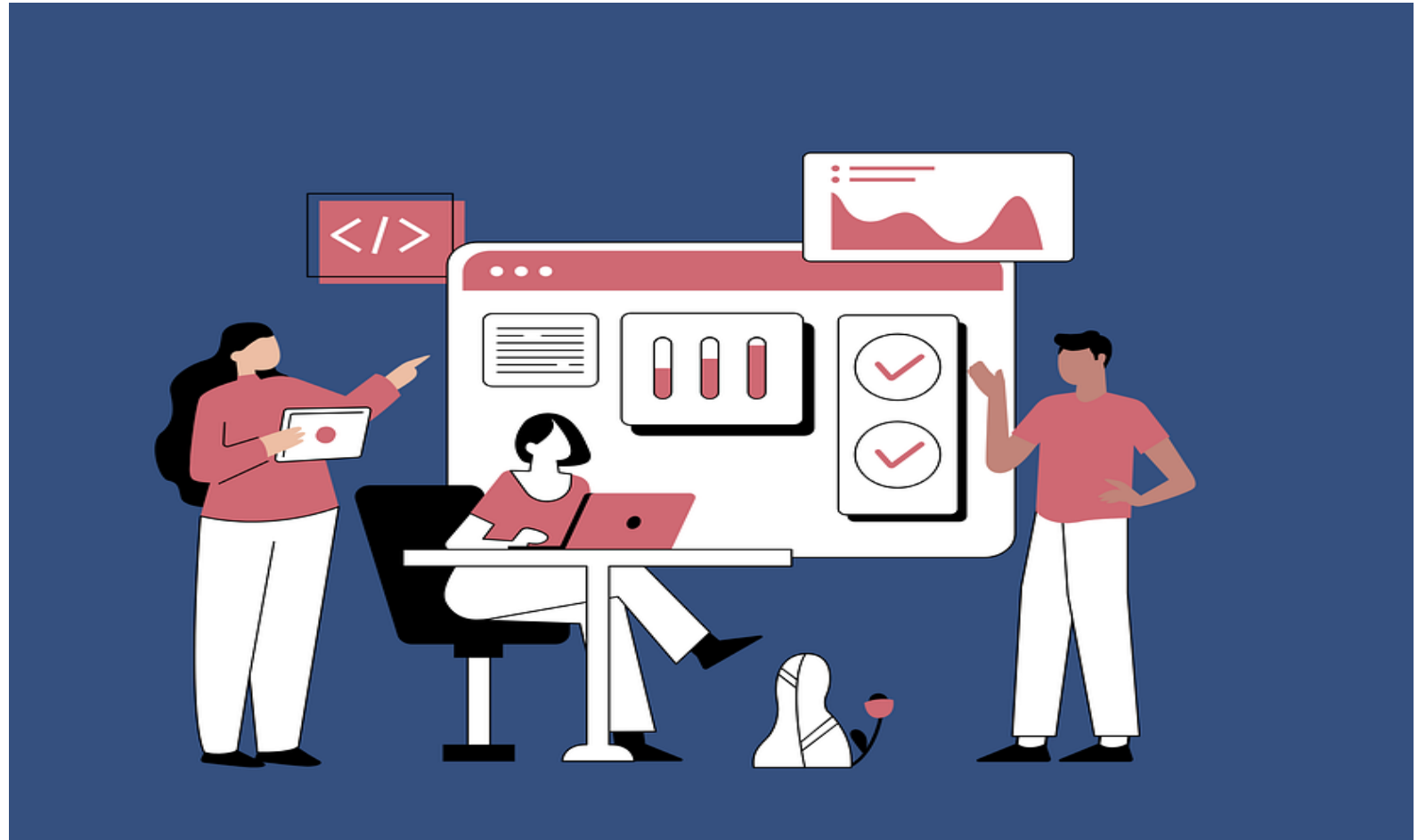
- Platforms for content and assessment
- Specialised video conferencing
- Specialised classroom technology including Hybrid/Hyflex
- e-Proctoring





# Classroom: Now - 2030

- Cameras
- Audio
- Presentation Tools
- Sync and Async
- Interaction
  
- Bandwidth
- Capabilities



# Content and Support: Now - 2030

- Third party sites and for students
  - Tutoring services
  - Open Source
  - Open Content
- 
- Freemium – Premium  
– Business Continuity



All

Documents

Q&amp;A

6,420 Document results for - Lawrie Phipps Digital

## Documents

All docs

Filter by your course

Homework

Test prep

Essay

Lab report

Notes

Document



A\_Standards\_Framework\_For...

**Lawrie Phipps** is the TechDis Senior Advisor for Higher Education in the UK. ...

Kabarak Univ INTE 213 • 2 views

Notes

kelly-**hipps**-alt-j-2006.doc

Holistic Approaches to E-Learning Accessibility **Lawrie Phipps** JISC TechDis Service York Science Park York, UK lawrie.phipps@heacademy.ac.uk Brian Kelly UKOLN University

Yale Univ PSYC MISC • 21 views

# Student: 2030?

Probably...

- Older age demographic
- Working and studying (more)
- Commuter? Family? Retired?
- Emphasis on...
- What does a student look like in an emerging asocial society



# Emerging Asocial Futures

- Prevalent in global north countries, to the detriment of individual and societal well-being.
- Reports of loneliness, amongst other things, might signal a socially disconnected way of life
- Drivers might be
  - changing nature of work,
  - individualism in society,
  - rising ubiquity of toxic social media
- What if this leads to...?
- Loss of social intelligence,
- A decline in physical and mental health
- Inability to interact meaningfully without the intervention of technology
- What does that mean for access, privacy, and ethics.
- What does a student experience look like in this future?





# Pandemic Impact on Practice





During the pandemic  
we have done  
hundreds of hours of  
interviews with staff  
and students

---

## Academics struggled with engagement, not content

- How do I talk to 300 students in an online lecture?
- How do I know they are paying attention?
- Why does an online lecture need to be an hour?

---

# Social Connectivity

- Isolation
- Platforms
- Colleagues
- Students

---

# Equipment and Space

- Staff
  - iPhone
  - Desktop culture
- Students
  - Bandwidth
  - Space

---

# Cameras and Class Participation

- Lack of bandwidth
- Privacy concerns
- Feeling weird...
- One student had concerns about being bullied





# Attainment / Awarding Gap

- Precarious Students
- Role of Technology
- Role of Assessment
  
- “Engagement”

---

## Before we “Snap Back”

- We need to identify what works better
- During the Pandemic we have advanced our use of technology
- We have advanced our understanding of the student experience
- In the rush to get “Back to Campus” we must protect those practices that serve the most vulnerable students and staff

---

# Implementing Technology into Teaching

- It is important to distinguish digital from innovation - they are not synonymous
- Mandating technology is not the same as supporting teaching practice
- There is a complex institutional relationship between innovation, trust and risk



Thanks

