

The experience of my university in addressing the introduction of an Open Science strategy and its implementation

Anna Lundhagen

Pro Vice-Chancellor Collaboration and Environmental Monitoring and Assessment
Swedish University of Agricultural Sciences

In natural sciences, social sciences and the humanities

- Transdisciplinary approach
- Curiosity-driven basic research
- Problem-solving studies



Biodiversity



Sustainable cities and rural areas



Biomaterials and bioenergy



Animal and human welfare



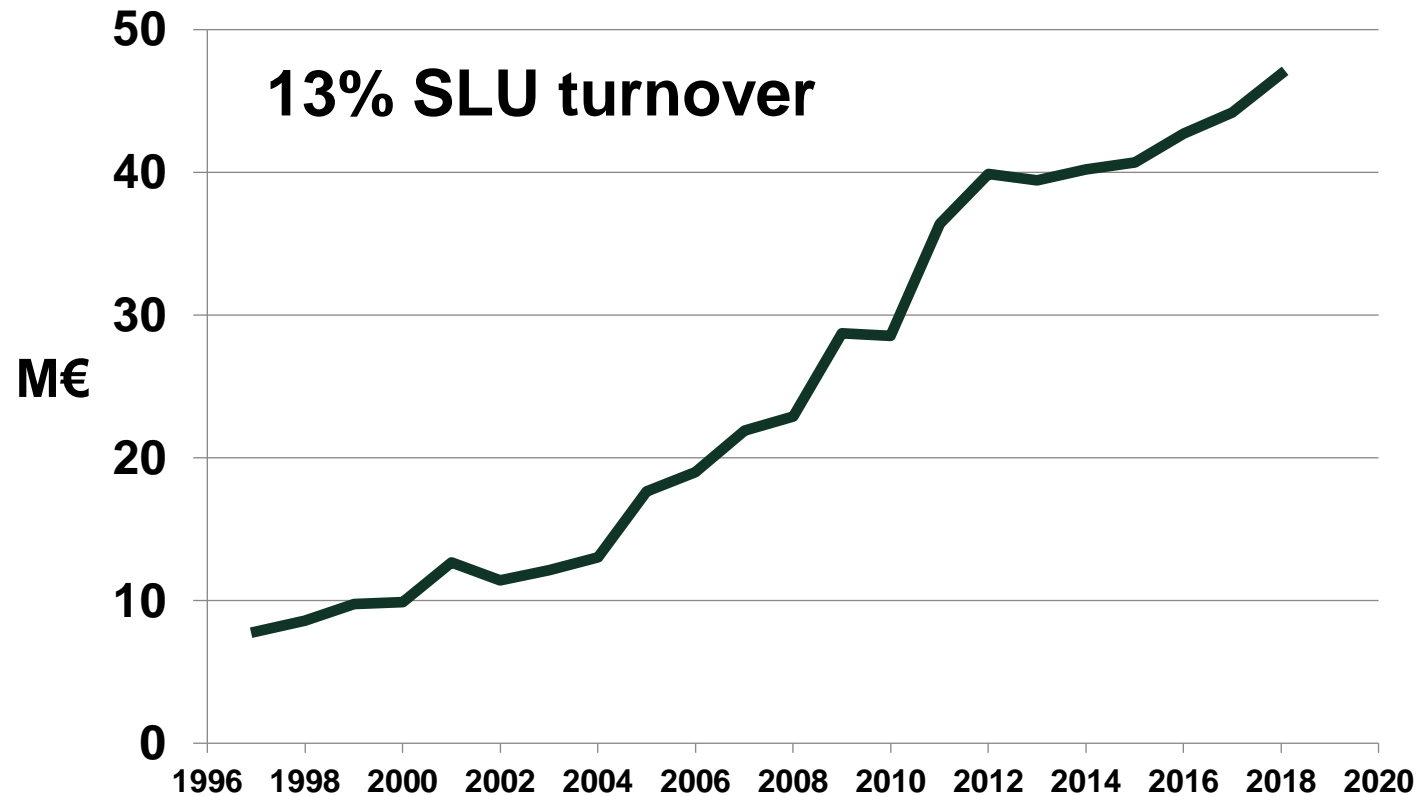
Sustainable food supply



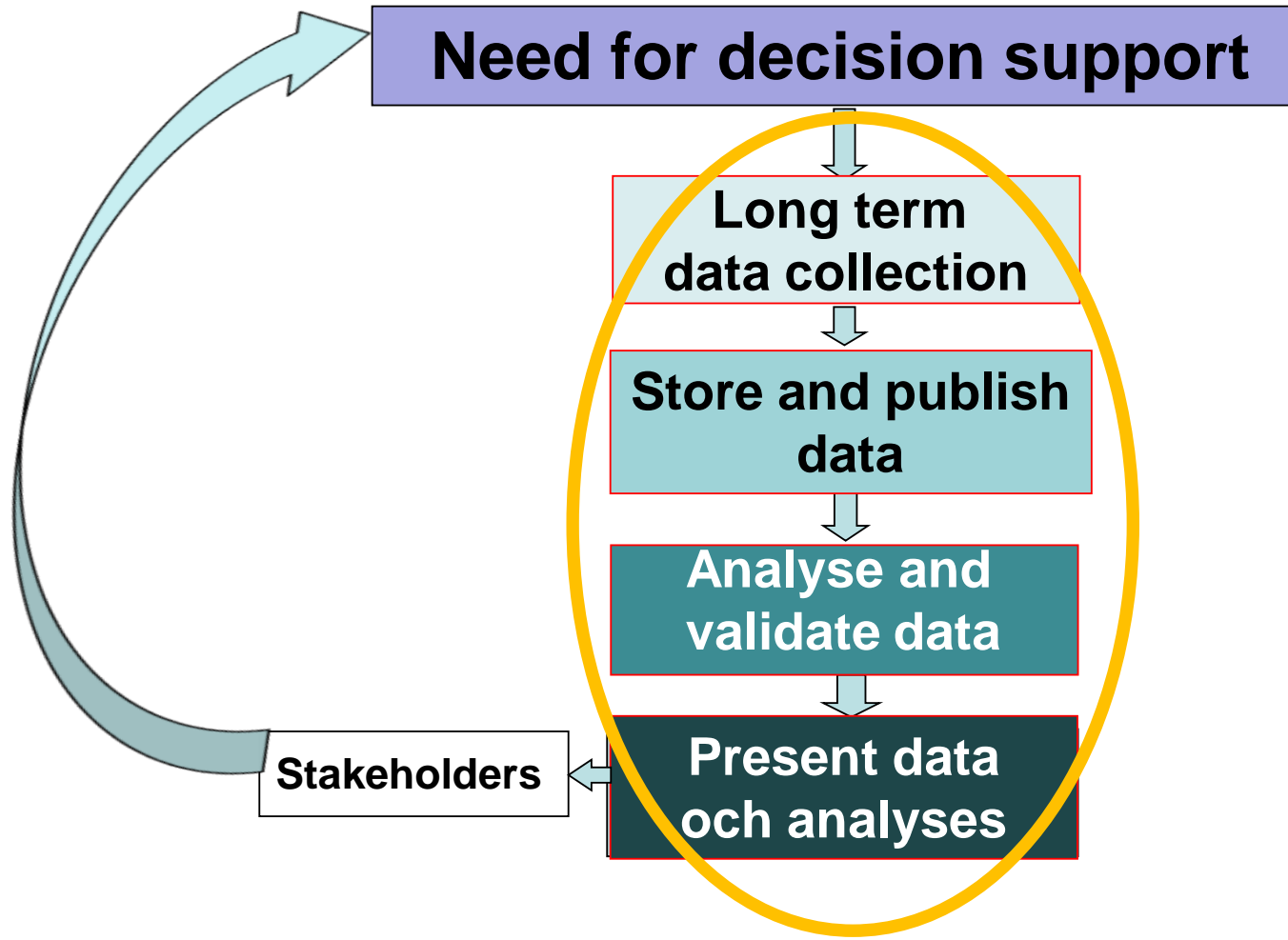
Clean water and oceans

Environmental monitoring and assessment (EMA)

Delivers science-based decision support
to reach environmental objectives



Environmental Monitoring and Assessment (EMA)



Open Science and Data Management Support

Session 3. Open Science and implications for Life Science Universities

Theme: Open Science is the overarching title, under which is Open Access, Open data, Open Education and sometimes also Citizen Science



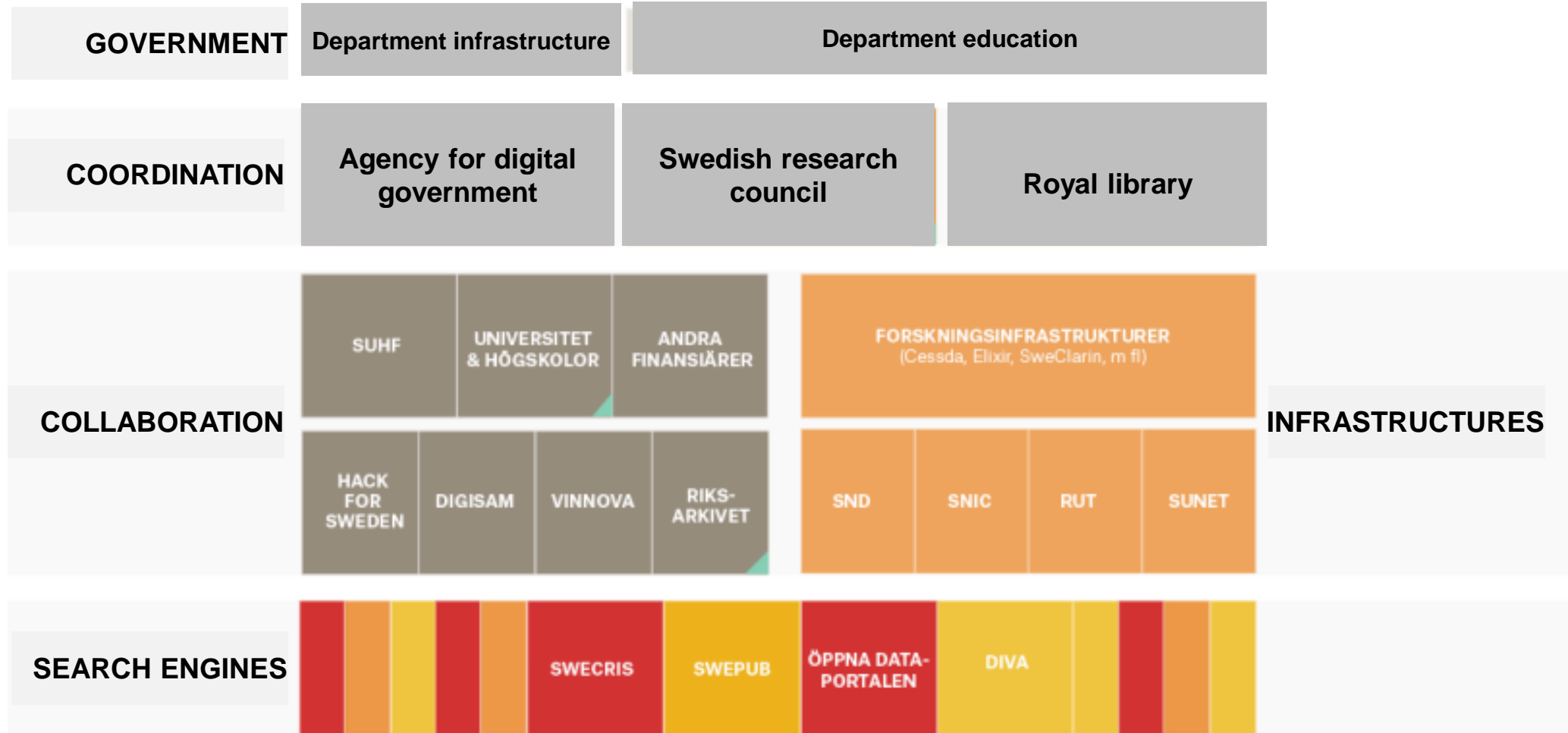
The Association of Swedish Higher Education Institutions

A road map built on international policies

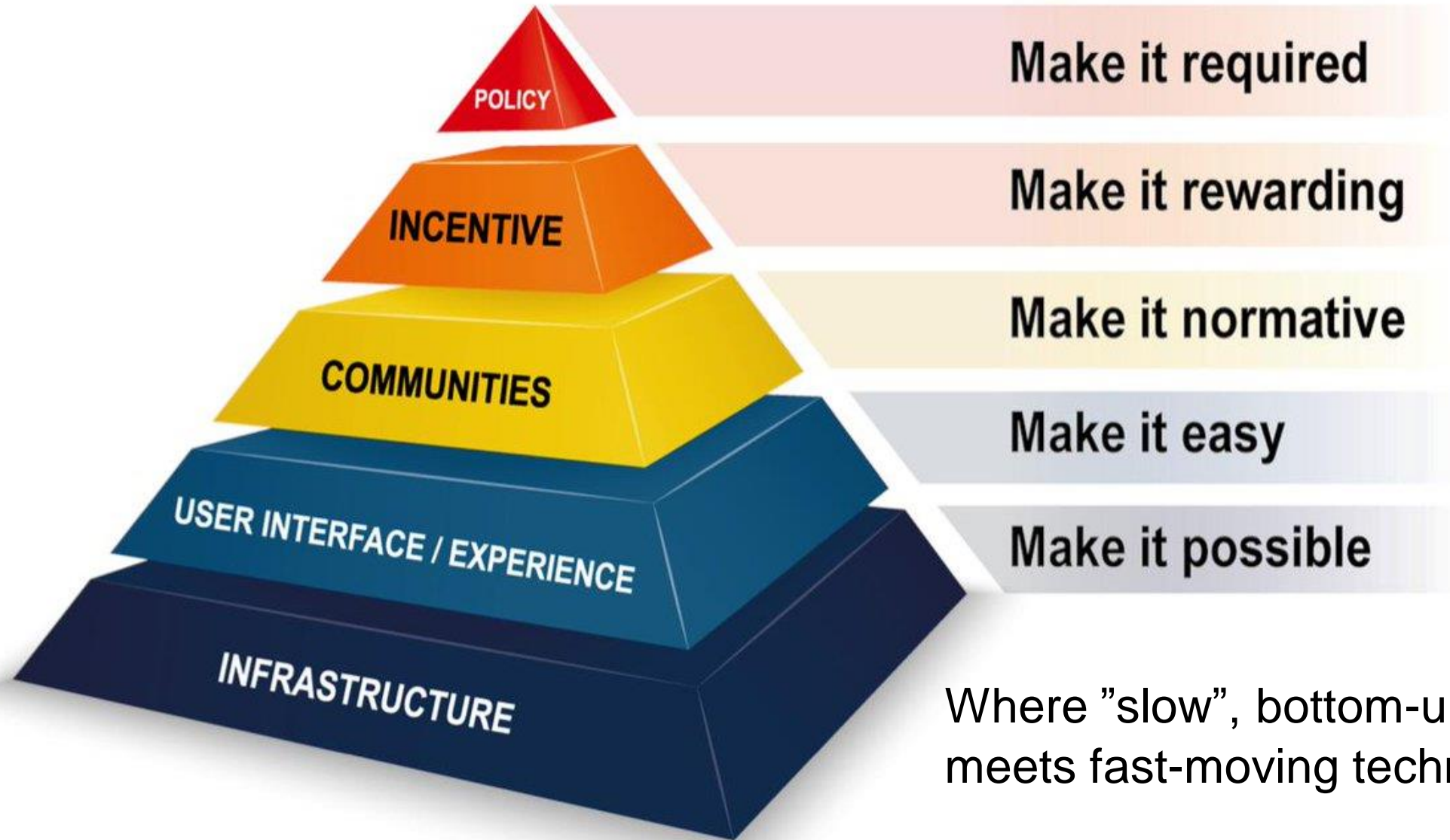
- Create supporting environments and guidelines
- Offer relevant, affordable and adequate support infrastructures – complex
- Support FAIR principles – Findable, Accessible, Interoperable, Reusable - complex
- Be active in international initiatives
- Develop reward and incentive practices – global dimension

- Work for open access of publications (2021) and open structures for reuse of data (2026)

Complex digital ecosystem in Sweden



Open science is a cultural change



Where "slow", bottom-up academy meets fast-moving technology

Data possession

Competition

Publications rewarded

Individual responsibility



Data sharing

Collaboration

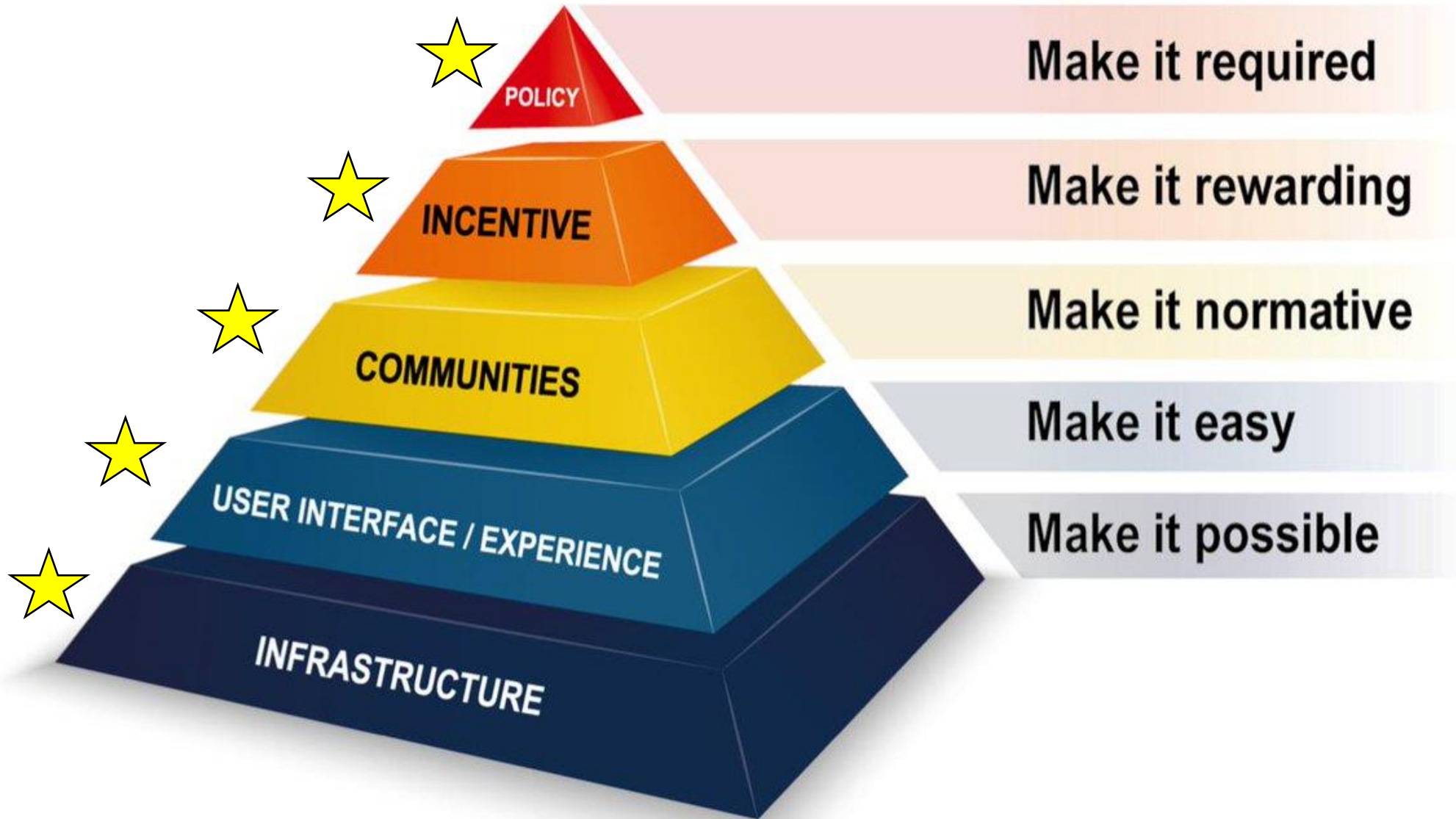
Data sharing rewarded

Professional support

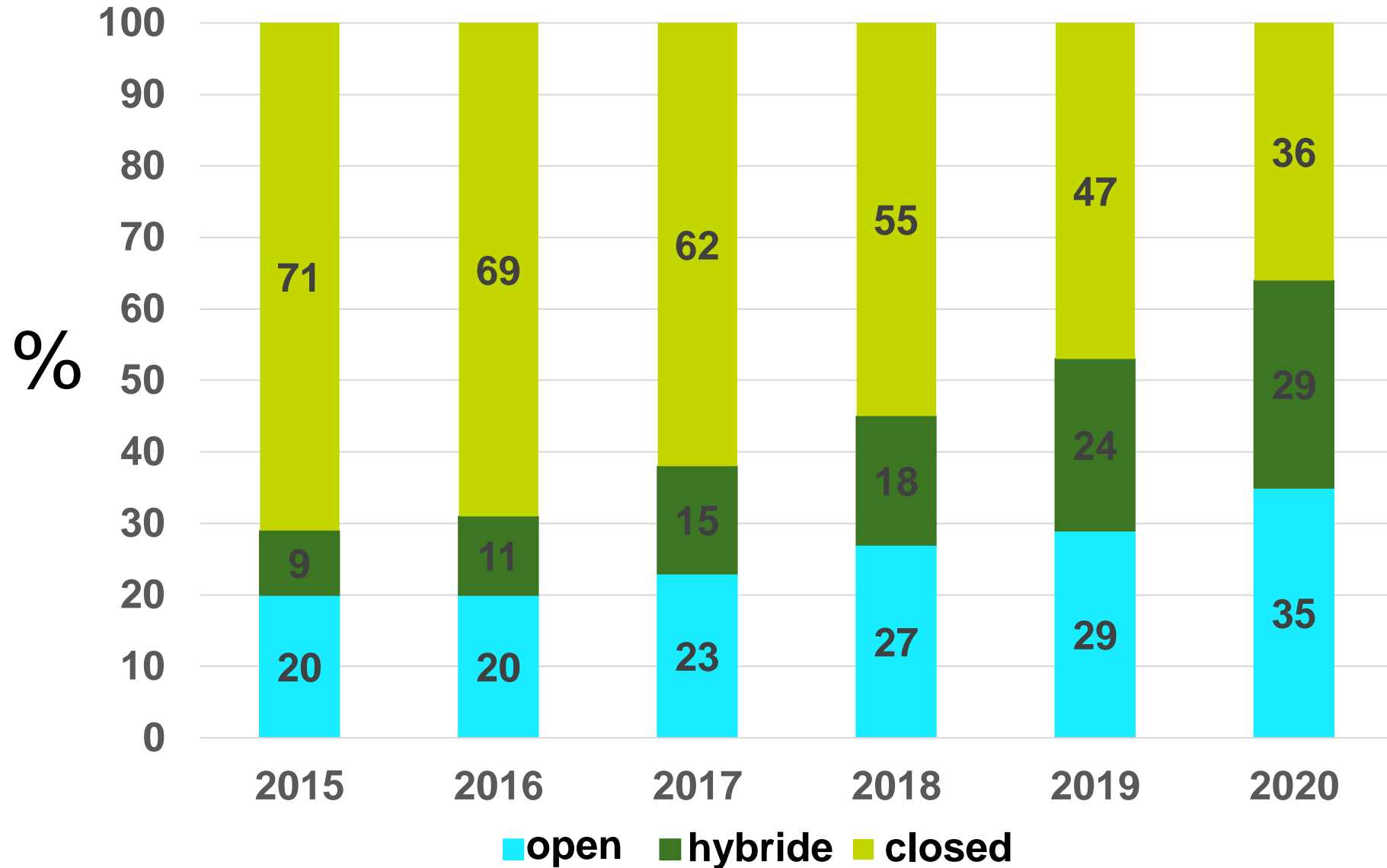




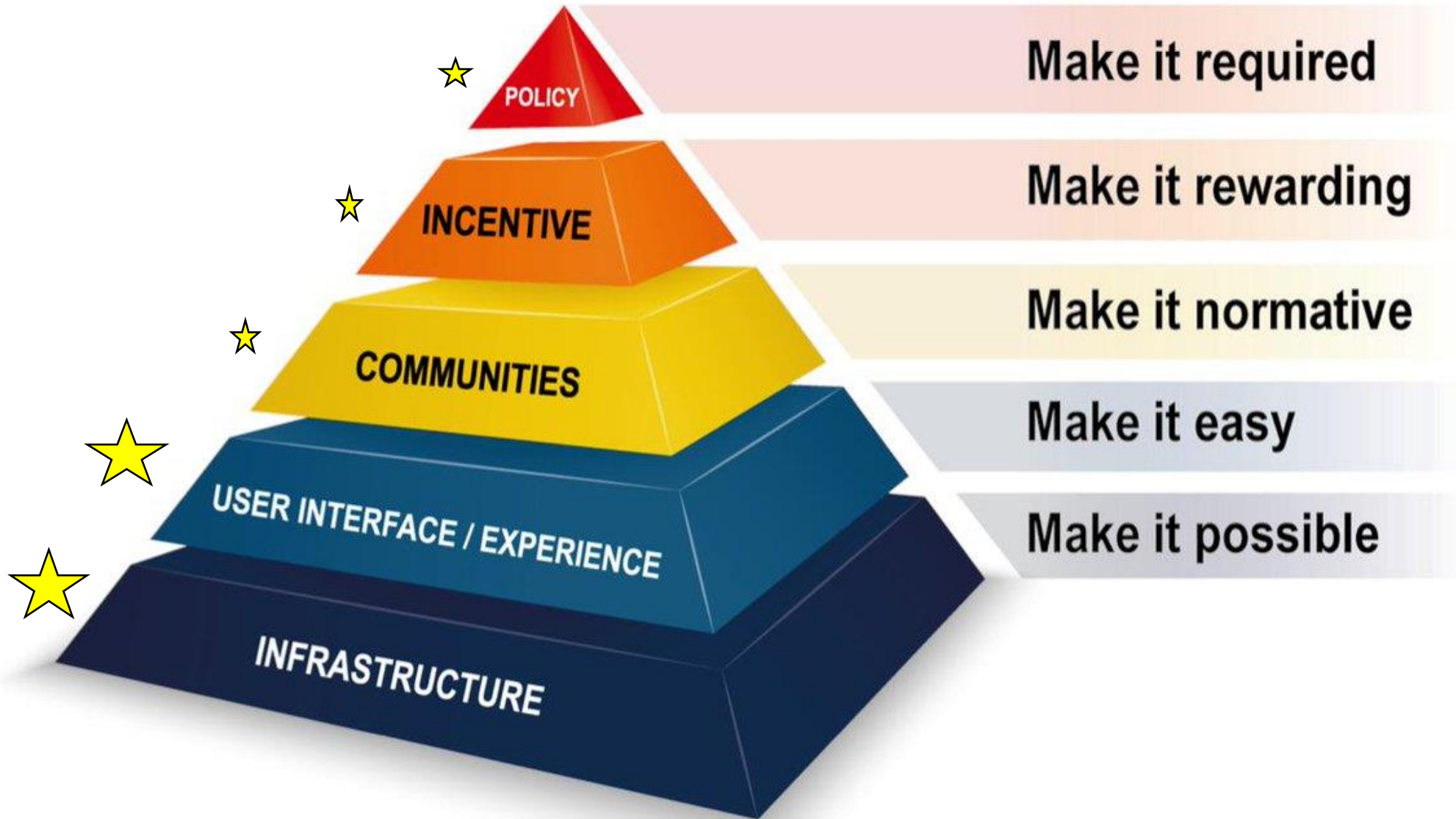
Open access



Open access articles at SLU



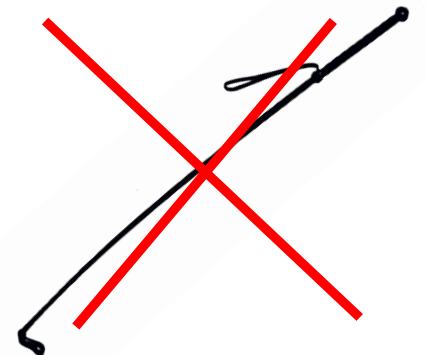
Open education





Open Education at SLU

MOOC <https://www.futurelearn.com/courses/effective-livestock-production#section>



Subjects ▾ Courses ▾ Using FutureLearn ▾

Search online courses



Sign in

Register

Online Courses / Healthcare & Medicine



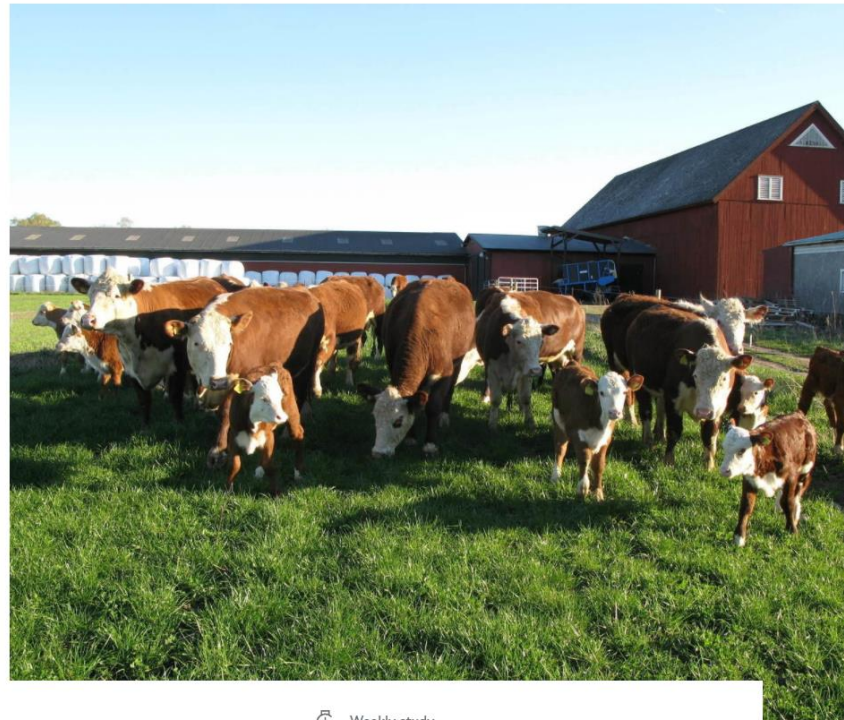
Effective Livestock Production with Low Use of Antibiotics

★★★★★ 4.8 (29 reviews)

Learn what antibiotic resistance is and how to prevent it while increasing productivity among your livestock.

Email me when I can join

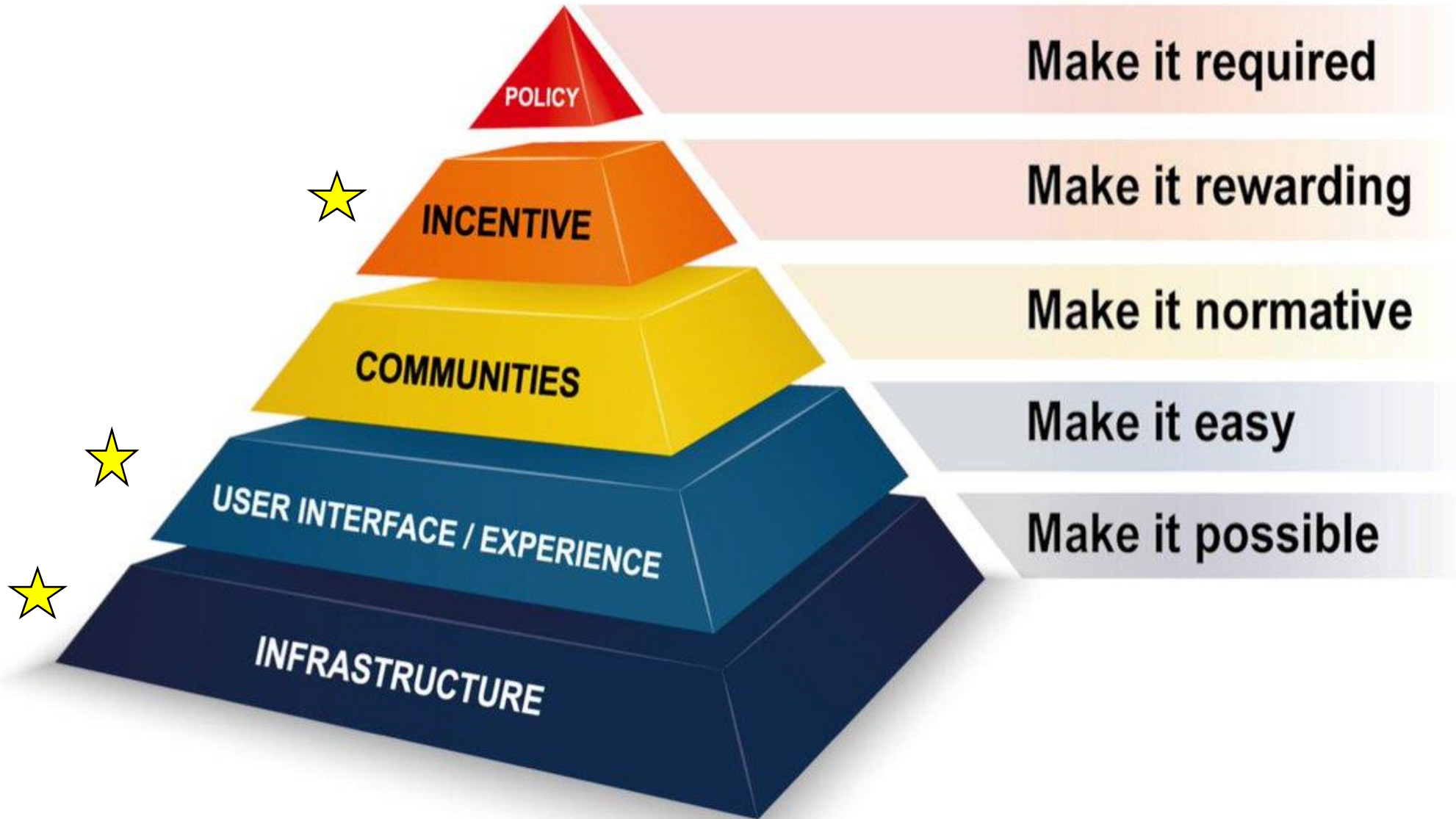
4 037 enrolled on this course



Duration
4 weeks

Weekly study
4 hours

Citizen Science



Citizen science at SLU

LAST CHANGED: 11 OCTOBER 2021

Are you interested in citizen science? Do you want to network with or learn from your colleagues? On this page you find information on current activities at SLU.

Current activities

Video. Get inspired by Tim Hofmeester, researcher at the Department of Wildlife, Fish and Environmental Studies in the latest episode of Urban Take-Aways that covers urban wildlife, citizen science and transdisciplinarity.



-  CONTACT
-  PRINT
-  LISTEN
-  SHARE

Mailing list for the SLU citizen science network: slu-medborgarforskning



Webinar series on citizen science



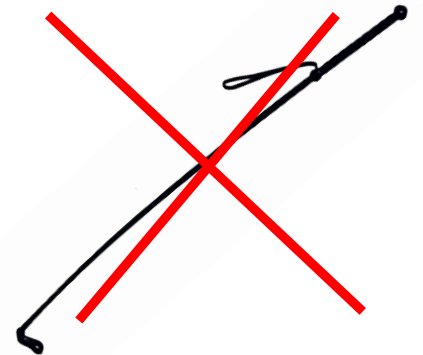
Workshop: Building capacity for Citizen Science at SLU



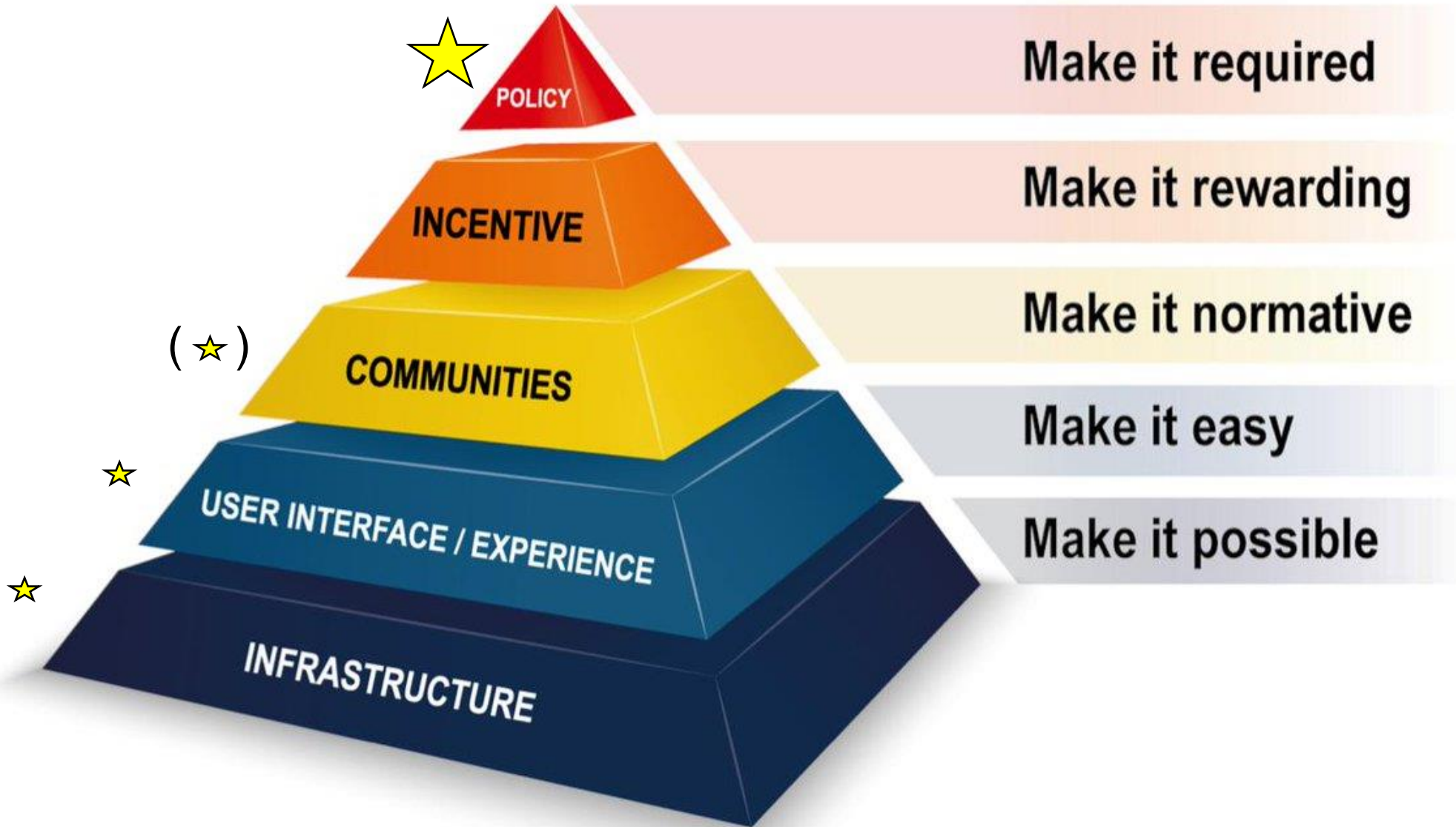
Citizen science projects at SLU



Part of the system
Support development



Open data



Requirements for research data availability



PLOS ONE



Data Management Plans

ERC grantees of projects that take part in the Horizon 2020 ORD pilot are required to submit a Data Management Plan (DMP) within six months after the start of their grant. Grantees are required to deposit their research data in a repository and provide open access at least to those data, including associated metadata, needed to validate the results in their publications. Access to other data, including associated metadata, has to be provided as specified in the DMP.⁵



Swedish Research Council

På svenska Search Menu

NEWS

By 2019, all who receive grants from us must have a data management plan

As from spring 2019, if you are awarded a grant from the Swedish Research Council you must have a plan for how the research data generated within your project shall be managed.

institution. RJ therefore decided to demand a DMP for projects that apply for RJ Infrastructure for research calls from 2020 and onwards. In the DMP, the focus is on digital data, although some sections relate to analog data.

RJ refers to [the national template](#) and [the tool for DMP developed by the Swedish Research Council](#) (or similar).

A completed DMP is considered when RJ assesses the feasibility of the project, where there should be a realistic, relevant and anchored DMP that extends beyond the end of the project period.

FORMAS

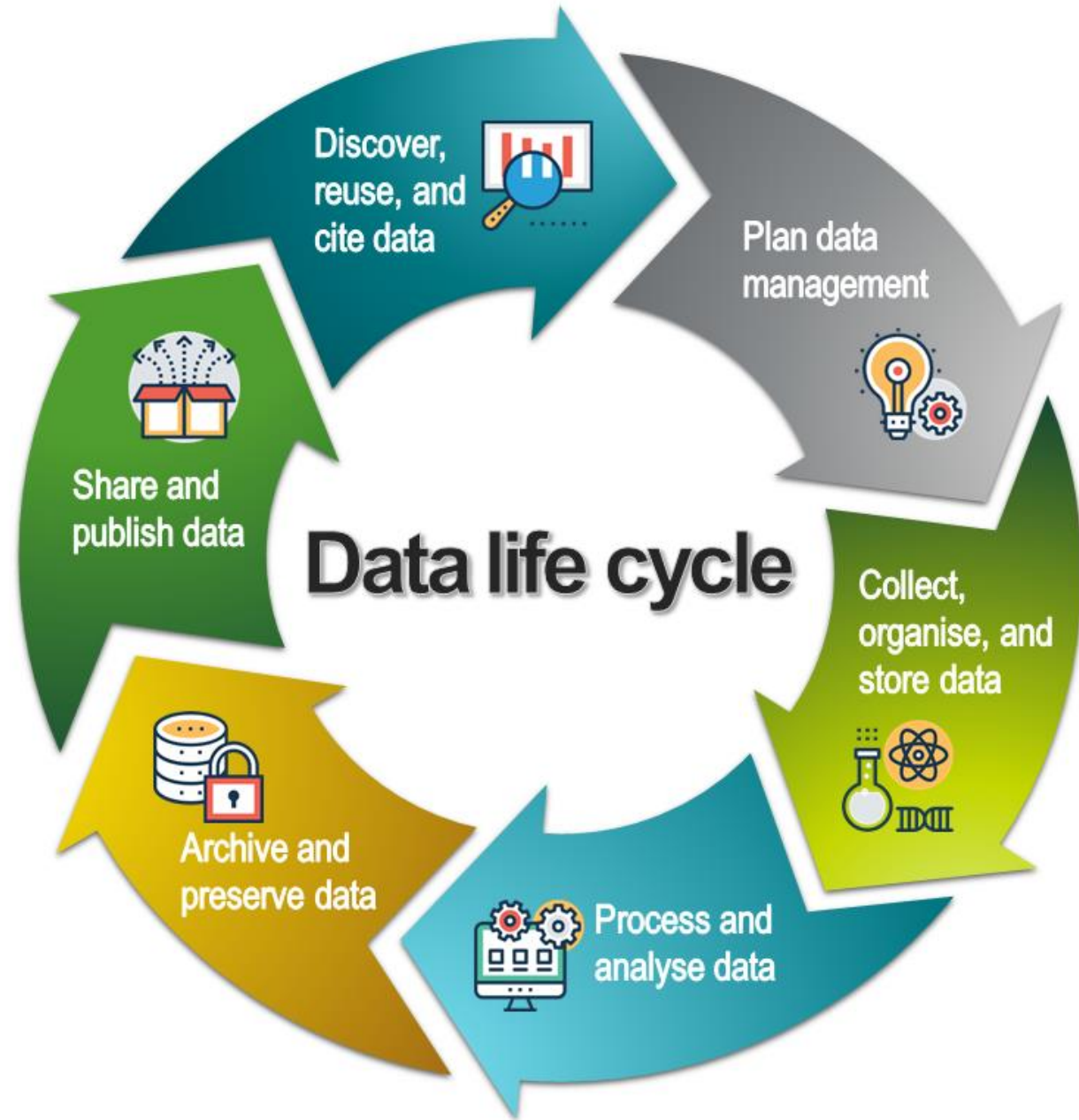
Keep a data management plan

You need to have a data management plan for the data produced in the project. If you receive funding, you need to develop a plan for data management. The plan should not be sent in to us but you should be able to present the plan upon request. We recommend that you follow the guidelines for data management plans developed by Science Europe. Read more about the guidelines in the report [Practical Guide to the International Alignment of Research Data Management](#)

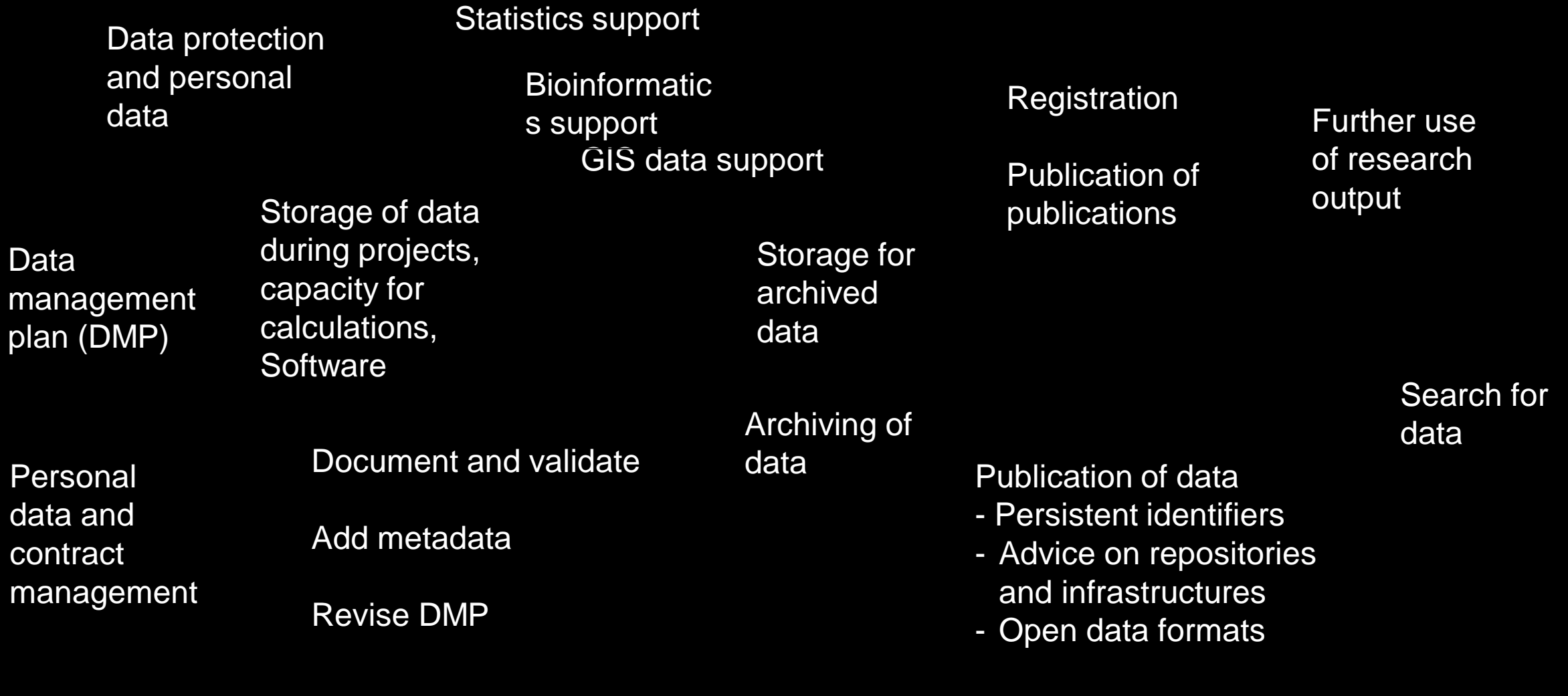


EU Grants: Data Management Template (HE):V1.0 – 05.05.2021

The Horizon Europe Model Grant Agreement requires that a data management plan ('DMP') is established and regularly updated. The use of this template is recommended for Horizon Europe beneficiaries. In completing the sections of the template the requirements for research data management of Horizon Europe as described in article 17 and analysed in the Annotated Grant Agreement, article 17, must be addressed.









Storage



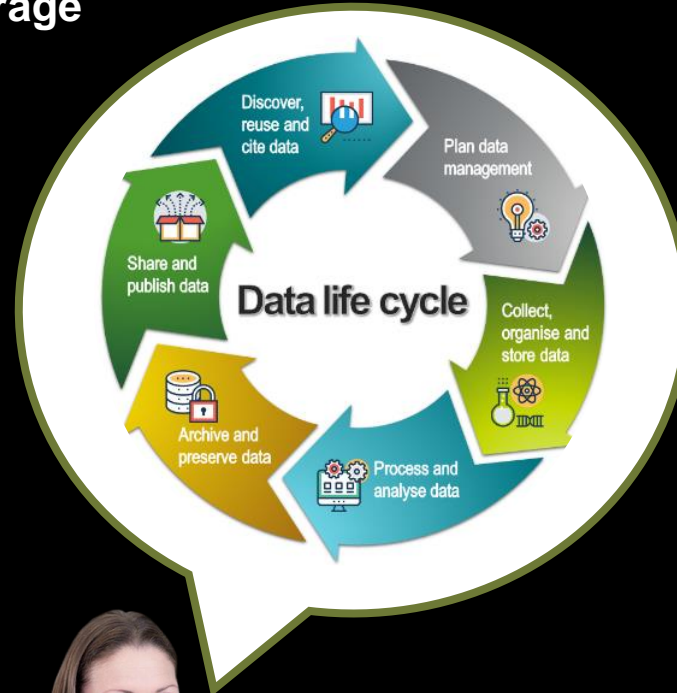
Rules and regulations



Archive...



Validation,
processing and
publication



Metadata and standards



Processing



Data management support

Curate data for long-term preservation and publishing

Develop the systematic quality work

Strengthen coordination



- Data management plans
- File formats
- Repositories
- Prepare for publishing
- Guidance on Open and FAIR data

Data Management Support

Library



Kerstin
Bellin



Hanna
Östholm



Karl
Pettersson

Archive

Coordinator



Hanna
Lindroos

SND



Ylva
Toljander



Cissi
Jansson



Ida
Taberman

EMA

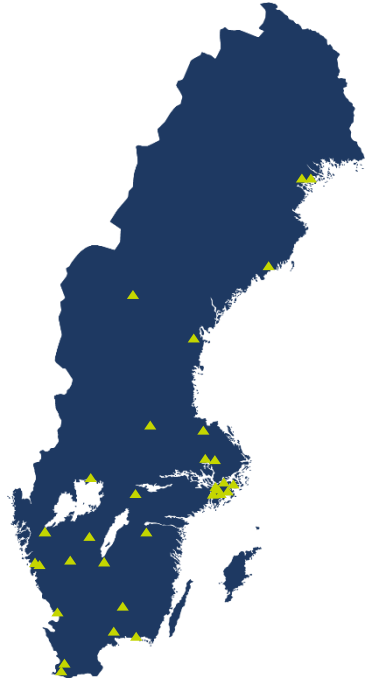


Jürg
Logue



Mikaela
Asplund





National network

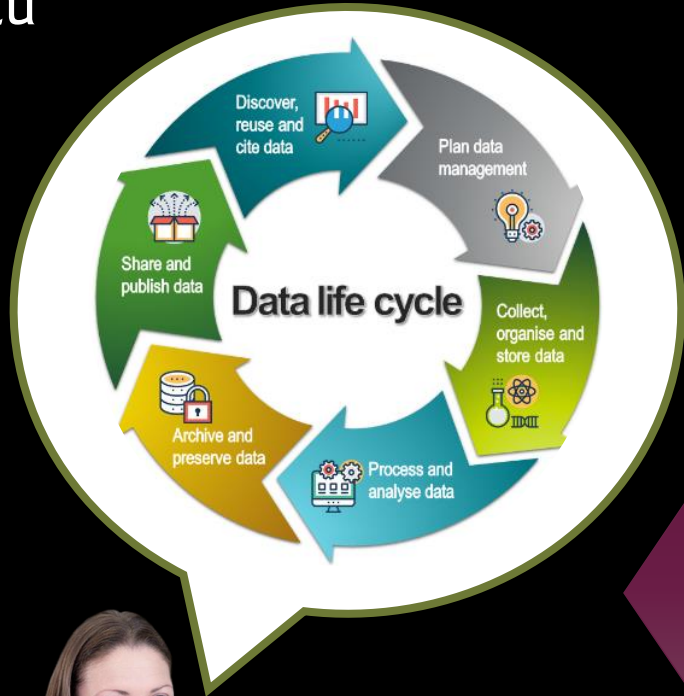


Research data
infrastructure

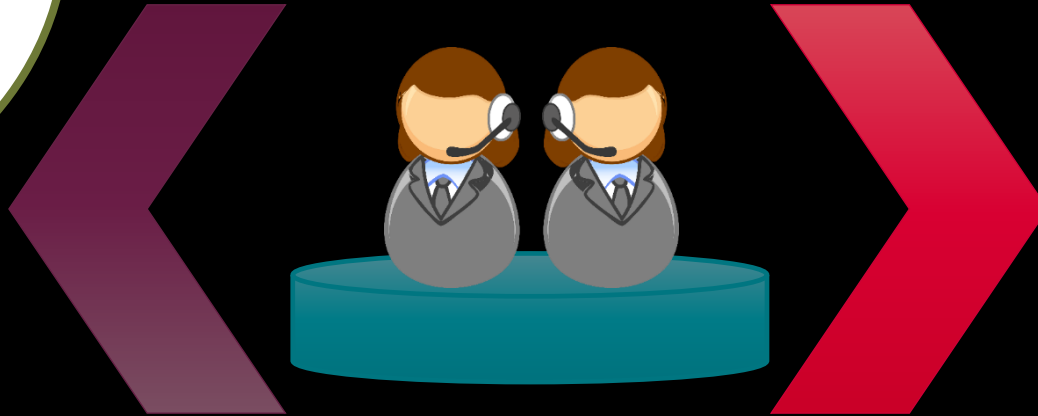
SND objectives

- To actively promote Open Science
- To coordinate the development of a trustworthy system of research data repositories
- To assist and benefit users with data publication and data management through education, support and technical prerequisites





Data management support organisation



Front desk

Data Management Support
@University library

Back office



IT department



Legal affairs



University library



Archive



Information management



Registry

Data Management Plan - obligatory

Development areas

- **Connections with IT and legal affairs**
 - Join very different expertis
- **Creating an optimal organisation**
 - Rectors´ level
- **Technical capacity**
 - IT achitects
- **Cultural transformation**
 - Encourage and offer support
 - Lift the quality driving aspect
- **Reward systems!**
 - Global apporach



Data possession

Competition

Publications rewarded

Separate professions



Incentives?

Data sharing

Collaboration

Data sharing rewarded

Cross boundary professions

What is your institutions' biggest challenges?

How implement open science in reward systems?

Game changers?