



INTRINSIC

INnovative educaTion foR sustainable eNtrepreneurShIP In Life sCIences

ICA Edu Colloquium 2019, 15 - 16 May 2019, Leuven Institute for Ireland in Europe, Belgium

DI Dr. Andreas Zitek, MSc

University of Natural Resources and Life Sciences Vienna

Higher Education Development, E-Learning & Didactics



ΓΕΩΠΟΝΙΚΟ ΠΑΝΕΠΙΣΤΗΜΙΟ ΑΘΗΝΩΝ
AGRICULTURAL UNIVERSITY OF ATHENS



WAGENINGEN
UNIVERSITY & RESEARCH



ICA
Association for European
Life Science Universities



**HELSINGIN YLIOPISTO
HELSINGFORS UNIVERSITET
UNIVERSITY OF HELSINKI**



**UNIVERSITEIT
GENT**



**UNIVERSITÀ
DEGLI STUDI
DI TERAMO**



Erasmus+

The INTRINSIC project is co-funded by the ERASMUS+ program of the European Union under grant no. **2018-1-AT01-KA203-039303**.

Definition of sustainable entrepreneurship



- **Conventional entrepreneurship** is more associated with **counteracting sustainable development**.
- **Sustainable entrepreneurial action** is seen as a promising way to preserve ecosystems, counteract climate change, reduce environmental degradation, improve agricultural practices, and maintain biodiversity.
- Activities performed by entrepreneurs in the pursuit of gains **must not undermine the ecological and social environments in which they operate; and when necessary, they must restore or nurture such environments towards recovering the balance between the environment, society and economic activity**.
- **Overarching aim: balance the competing demands for environmental protection and economic development, emphasizing economic, ecological and social goals in equal degrees.**

Source: Ploum, L. (2018). The return of the Jedi in Entrepreneurship. Developing a competence framework for sustainable entrepreneurship. <http://edepot.wur.nl/428410>



INTRINSIC



Co-funded by the
Erasmus+ Programme
of the European Union



INnovative educaTion foR sustalnable eNtrepreneurShIp In Life sCiences

ERASMUS+ Strategic partnership - total grant 305.640 €

Strategic Partnerships in HE must focus on activities designed to improve HE provision across the participating countries.

- Projects are expected to **develop innovative outputs**.
- Applicants have the possibility to request a dedicated budget for **Intellectual Outputs** and **Multiplier Events** in order to directly answer to the innovation aspect of the Action.
- there is a strong link with **policy objectives**
- it is based on a **solid needs** analysis
- the needs identified are relevant in the context of the **HE Modernisation Agenda**
- there is clear **added value** from **transnational dimension**
- the project involves an **appropriate mix participating organisations**



9 Partners

1. BOKU – UNIVERSITY OF NATURAL RESOURCES AND LIFE SCIENCES, HIGHER EDUCATION DEVELOPMENT UNIT (ANDREAS ZITEK, BARBARA HINTERSTOISSER)
2. AUA – AGRICULTURAL UNIVERSITY OF ATHENS (PANAGIOTIS PANAGAKIS, CHRIS BRIASSOULIS, DEMETRES BRIASSOULIS)
3. BUAS - UNIVERSITATEA DE STIINTE AGRICOLE SI MEDICINA VETERINARA A BANATULUI „REGELE MIHAI I AL ROMANIEI” DIN TIMISOARA (TEODOR TRASCA)
4. FAZ - UNIVERSITY OF ZAGREB, FACULTY OF AGRICULTURE (RENATA BAŽOK)
5. ICA - ASSOCIATION FOR EUROPEAN LIFE SCIENCE UNIVERSITIES (SIMON HEATH)
6. UGENT – GHENT UNIVERSITY (MIA ECKHOUT)
7. UH - UNIVERSITY OF HELSINKI (JANNA PIETIKÄINEN, LÄHTEVÄNOJA, ANTTI J)
8. UnITE - UNIVERSITY OF TERAMO, FACULTY OF BIOSCIENCE AND TECHNOLOGY FOR FOOD AGRICULTURE AND ENVIRONMENT (PAOLA PITTIA, EMILIO CHIODO)
9. UW – UNIVERSITY OF WAGENINGEN (THOMAS LANS, LISA PLOUM)



ΓΕΩΠΟΝΙΚΟ ΠΑΝΕΠΙΣΤΗΜΙΟ ΑΘΗΝΩΝ
AGRICULTURAL UNIVERSITY OF ATHENS



HELSINGIN YLIOPISTO
HELSINGFORS UNIVERSITET
UNIVERSITY OF HELSINKI



UNIVERSITÀ
DEGLI STUDI
DI TERAMO



WAGENINGEN
UNIVERSITY & RESEARCH



Erasmus+

The INTRINSIC project is co-funded by the ERASMUS+ program of the European Union under grant no. **2018-1-AT01-KA203-039303**.



Background & need

- **Development of entrepreneurial competencies in students** is promoted by many universities with courses **offered in specialised departments.**
- **Development of entrepreneurial competencies is not well integrated** into the mainstream curriculum at the Bachelor and Master levels.
- **Lack and need of structured and aligned materials** for HE teachers in the field of SE education and assessment across LSUs in Europe - only fragmented practices in LS in each country are available so far
- As a result, **significant latent potential** of students' entrepreneurial innate skills **remains untapped.**





General aim

...to empower Life Science
Universities to develop
their students' Sustainable
Entrepreneurship
Competencies...





Specific Goals & Objectives

- To improve the capacity of LSUs to integrate innovative practices in the offer for sustainable entrepreneurial education in a modern and effective higher education system.
- To provide and support LSUs teachers with innovative modular entrepreneurial pedagogical practices, didactic materials and training via an open, interactive and digital ePlatform.
- To enhance and extend entrepreneurial education in LSUs with a bottom-up approach by fostering the adoption and implementation of SE by LSUs teachers.
- An INTRINSIC network of teachers in LSUs focusing on SE will be created and will be supported by the INTRINSIC Connected Entrepreneur Educator APP.





Intellectual Outputs

- O1 INTRINSIC modular interactive web-platform & INTRINSIC Connected Entrepreneur Educator APP
- O2 INSTRINSIC Entrepreneur Monitoring APP
- O3 INTRINSIC Design tool for teaching sustainable entrepreneurship in Life Sciences
- O4 INTRINSIC Staff development module
- O5 INTRINSIC Case studies, testimonials & application recommendation/good practice



WAGENINGEN
UNIVERSITY & RESEARCH



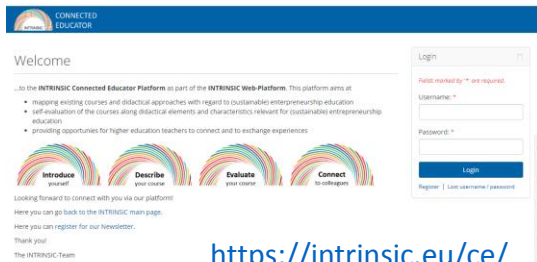
HELSINGIN YLIOPISTO
HELSINGFORS UNIVERSITET
UNIVERSITY OF HELSINKI



Erasmus+

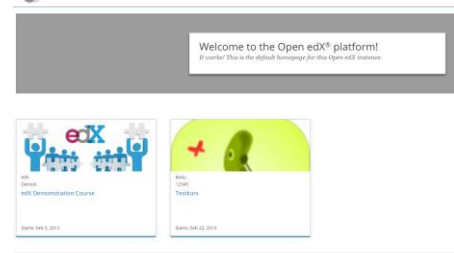
The INTRINSIC project is co-funded by the ERASMUS+ program of the European Union under grant no. **2018-1-AT01-KA203-039303**.

O1 Connected Educator App, course mapping



<https://apps.liveapp.eu/pwa/intrinsicteacherapp>

O1 MOOC platform for course



<https://learning-intrinsic.boku.ac.at/>

O2 Student app with Monitoring tool (Teacher App?)



<https://apps.liveapp.eu/pwa/intrinsic>

Newsletter

INTRINSIC Newsletter registration
[back to INTRINSIC main page](#)

<https://www.newsletter2go.de/>

Social media



https://twitter.com/INTRINSIC_EU

<https://www.facebook.com/INTRINSIC.EU>

<https://www.linkedin.com/groups/8719364/>



Teacher questionnaire

For teachers sent with first newsletter



Questionnaire for teachers to scan students

<https://docs.google.com/forms/d/1DUyYdX057mGQEqd54DHKMTXlOPDmxMGw5-8lwKfBpqM/copy>

O1 INTRINSIC Webpage



<https://intrinsic.eu/>

O3 Teaching Design Tool (Ugent)

O4 Staff Development Module (BOKU)

O5 Case studies (UH)

Structure of the INTRINSIC Platform

Webinars

Webinars of the INTRINSIC project
[back to INTRINSIC main page](#)

Webinar of VR in entrepreneurship education

Our first webinar will deal with the potential use of Virtual Reality (VR) in entrepreneurship education.

Webinar 3

Webinar to be informed. You will be notified. If you have registered to one of the prior webinars.

Webinar 2

Webinar to be planned. You will be notified, if you have registered to one of the prior webinars.

Webinar 4

Webinar to be informed. You will be notified. If you have registered to one of the prior webinars.

<https://intrinsic.eu/webinars-of-the-intrinsic-projectback-to-intrinsic-main-page.html>

INTRINSIC student sustainable entrepreneurship scan

Please read the following instructions carefully.

What to expect?

On the next pages you will find a list of 7 competencies and related performance criteria. All these competencies focus on sustainable entrepreneurship: activities and processes to discover, evaluate and exploit opportunities in order to enhance sustainability. With sustainability (issues) we mean challenges, such as energy saving, waste management, labour conditions, maintaining biodiversity, carbon foot print reduction and social responsibility.

How to fill in?

The performance criteria can more or less be applied to yourself. Rate yourself according to your own opinion about your performance for a criterion at this moment by giving yourself a mark between 1 and 10 (1 = low and 10 = high) for every criterion. It is important that you give yourself a honest mark for every performance criterion, remember that the results are anonymous because of the unique code. It could be that some of the criteria haven't been trained in your study program yet or didn't get the chance to be trained in any other situation in your life (e.g. internship, work at home, holiday job). Show this by giving a low score for these criteria.



Erasmus+

The INTRINSIC project is co-funded by the ERASMUS+ program of the European Union under grant no. **2018-1-AT01-KA203-039303**.



Intellectual Output 1

- ePlatform and its modular elements
 - ePlatform itself
 - Course Mapping & exchange (professional Portfolio Tool, Mahara)
 - Connected Educator App (PWA, open source Siberian CMS) – elements for teachers – direct link to resources, microlearning
 - Subsections for
 - App tool for student monitoring (O2)
 - Teaching Design Tool (O3)
 - OPEN EDX - staff development module (O4)
 - Webinar section with registration etc. (ZOOM)
 - Social media links

https://twitter.com/INTRINSIC_EU

<https://www.facebook.com/INTRINSIC.EU>

<https://www.linkedin.com/groups/8719364/>



Erasmus+

The INTRINSIC project is co-funded by the ERASMUS+ program of the European Union under grant no. **2018-1-AT01-KA203-039303**.

O1-1a Webplatform

<https://intrinsic.eu>



Background Project Goal Project Output Team Co-funded by the European Union Resources Meetings Publications Webinars Newsletter



INnovative educaTion foR
sustainable eNtrepreneurShIp
In Life sCIences



Erasmus+

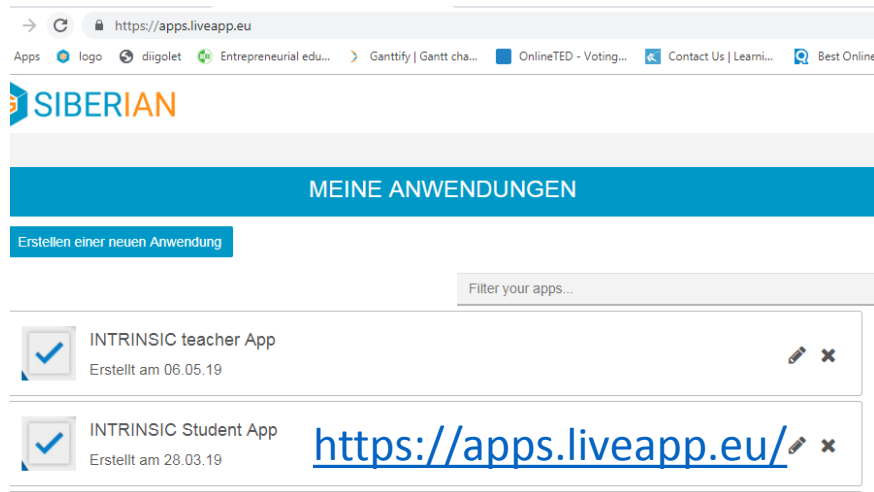
The INTRINSIC project is co-funded by the ERASMUS+ program of the European Union under grant no. **2018-1-AT01-KA203-039303**.

O1-1b Connected educator App



Challenges

- Select design & functionalities
- Select way of publishing (PWA)
- Implement knowledge & communication elements (quiz, social media, push, links to other resources)
- Make it attractive to use be used



Erasmus+

The INTRINSIC project is co-funded by the ERASMUS+ program of the European Union under grant no. **2018-1-AT01-KA203-039303**.

O1-2 Course Mapping & exchange

<https://intrinsic.eu/ce>



Welcome

Login

Challenges

- Make it attractive and easy to use for teachers to participate
 - Access to the student scan form, guiding videos, pre-defined categories for course descriptions
- Create a REAL network
- Privacy statement (GDPR)



Here you can [find a short video on how to register and start to participate in the INTRINSIC connected educator platform](#) (it is recommended to open the video in a new tab by right-clicking and selecting the "open in new tab" option.)

Looking forward to connect with you via our platform!

Here you can [go back to the INTRINSIC main page](#).

Here you can [register for our Newsletter](#).

Thank you!

The INTRINSIC-Team



Erasmus+

The INTRINSIC project is co-funded by the ERASMUS+ program of the European Union under grant no. **2018-1-AT01-KA203-039303**.



O1-3 Course mapping tool

My course collection for evaluation

You are on page 2/2



My first course description (please change name to your course name)

by Connected Educator



Template: My first course description

A University name

Please add your University name here.

A Learning

Please add

CONNECTED
EDUCATOR

Search users



A Study program

Please provide the

A EC

DIDACTICAL DETAILS, TASK and METHOD EVALUATION FRAMEWORK

by Connected Educator

A Subject field

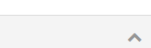
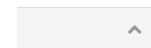
In which subject
entrepreneurship

- ☐ Natural Sciences
- ☐ Social Sciences
- ☐ Engineering
- ☐ Business
- ☐ Agricultural
- ☐ Forestry
- ☐ Water Management
- ☐ Other (please specify)

A Name of

Please add HERE
a link to the originalYou must enter a
subject that apply, and

Link to your course



2 Scope of task



Challenges

- Define & relevant fields for collecting information
- Implementation for easy filling

Advantage

- Additional information (videos, pdfs, images etc. can be integrated easily, as it is a Portfolio software



Erasmus+

The INTRINSIC project is co-funded by the ERASMUS+ program of the European Union under grant no. **2018-1-AT01-KA203-039303**.



O1-4 - Open EDX & LRS





O1-5 – Webinar page (ZOOM)

Webinars of the INTRINSIC project

[back to INTRINSIC main page](#)

Webinar of VR in entrepreneurship education

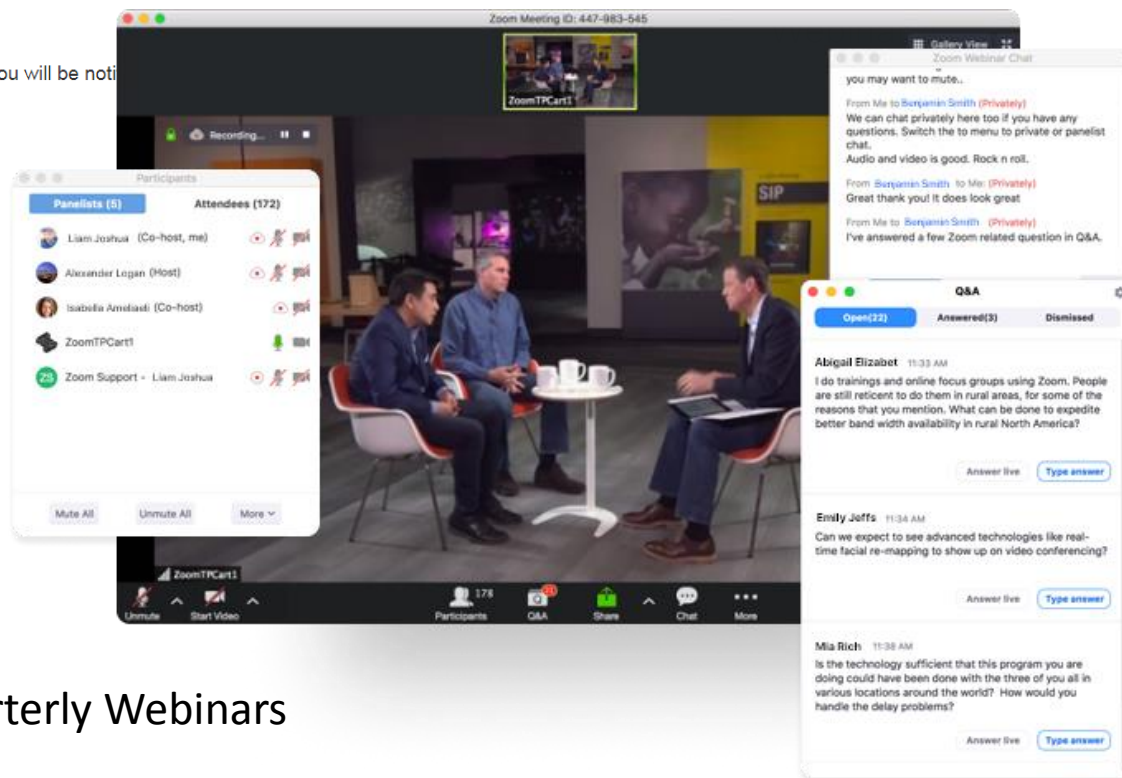
Our first webinar will deal with the potential use of Virtual Reality (VR) in entrepreneurship education.

Webinar 3

Webinar to be planned. You will be notified, if you have registered to one of the prior webinars.

Webinar 2

Webinar to be planned. You will be notified, if you have registered to one of the prior webinars.



Quarterly Webinars



Erasmus+

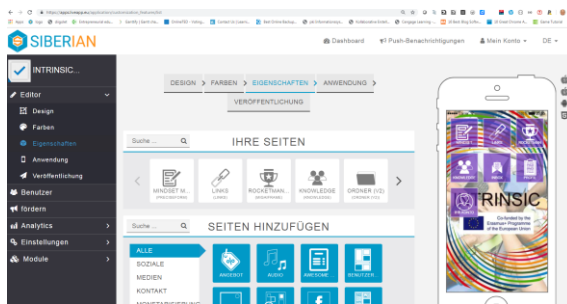
The INTRINSIC project is co-funded by the ERASMUS+ program of the European Union under grant no. **2018-1-AT01-KA203-039303**.

O2 - INTRINSIC Entrepreneur Monitoring APP



To open the 'black-box' of entrepreneurial learning for teachers and course developers requires the collection of micro-level learning data which provides better insight in learning processes and the factors influencing those process. We suggest to collect this data via a **web-based/app-based tool**.

SIBERIAN CMS – open source with configurable modules
Progressive WebApp – no stores



Erasmus+

The INTRINSIC project is co-funded by the ERASMUS+ program of the European Union under grant no. **2018-1-AT01-KA203-039303**.

03 - Design tool for teaching sustainable entrepreneurship in LS



- Easy access tool containing a stepwise method to develop course modules for LS
 - offers guidance to teachers to implement teaching in sustainable entrepreneurship in their curricula.
 - different steps in course development starting with the definition of the domain and the description of the skills and competences students should acquire.
 - selection of relevant course interventions and learning methods
 - assessment of the skills and competences
- Innovation
 - Connection to SDGs & sustainability
 - Situation Judgement Tests (SJTs) for assessing sustainable entrepreneurship competencies
 - **Challenge:** How to collect and also analyse the data? (Learning Record Store, xApi Statement, offered via the App)
 - Design tool framework which
 - assists teacher self-evaluation
 - connects entrepreneurial learning evaluation to the generic evaluation strategies of universities



SDGs mapped to BOKU Competence Areas





O4 - Staff development module

Selected elements

1. The entrepreneurial journey (definitions and process itself)
2. Linking entrepreneurship in Life Sciences to SDGs (with a direct link with the examples from the case in O3-3)
3. Understanding and mapping student characteristics relevant for sustainable entrepreneurship education in different phases of the entrepreneurial journey (latent, nascent, novice, serial).
4. Designing learning activities (including improvement by evaluation) for sustainable entrepreneurship education in Life Sciences for SDGs





O5 - Case studies, testimonials & application recommendation/good practice

- Collecting case studies and making them accessible for others
- Basis is also the course mapping (O1)
- Selected case studies linked to the personal professional teaching profiles of the related HE teachers will be structured and made openly available from the Connected Educator platform
- Instructor/facilitator guideline for best practice





Multiplier Event

International conference on teaching & learning
Sustainable Entrepreneurship in Life Sciences

Vienna Jul 2021



Erasmus+

The INTRINSIC project is co-funded by the ERASMUS+ program of the European Union under grant no. **2018-1-AT01-KA203-039303**.



Register for our Newsletter!

<https://www.intrinsic.eu>

INTRINSIC Newsletter registration
[back to INTRINSIC main page](#)



First Name

Last Name

Email



Erasmus+

The INTRINSIC project is co-funded by the ERASMUS+ program of the European Union under grant no. **2018-1-AT01-KA203-039303**.



Participate in our Network!



CONNECTED
EDUCATOR

Welcome

...to the **INTRINSIC Connected Educator Platform** as part of the **INTRINSIC Web-Platform**. This platform aims at

- mapping existing courses and didactical approaches with regard to (sustainable) entrepreneurship education
- self-evaluation of the courses along didactical elements and characteristics relevant for (sustainable) entrepreneurship education
- providing opportunities for higher education teachers to connect and to exchange experiences

What do you gain, when you are registering for and participating in the **INTRINSIC Connected Educator Platform**?

- Present your teaching approaches and connect to a broader community of higher education teachers in Life Sciences for

Login



*Fields marked by * are required.*

Username: *

Password: *

sword

You will be notified by our newsletter!



Introduce
yourself



Describe
your course



Evaluate
your course



Connect
to colleagues

Here you can find a short video on how to register and start to participate in the **INTRINSIC connected educator platform** (it is recommended to open the video in a new tab by right-clicking and selecting the "open in new tab" option.)

Looking forward to connect with you via our platform!

Here you can go back to the **INTRINSIC** main page.

Here you can register for our Newsletter.

Thank you!

The **INTRINSIC**-Team



Connected
Educator



Erasmus+

The **INTRINSIC** project is co-funded by the **ERASMUS+** program of the European Union under grant no. **2018-1-AT01-KA203-039303**.



Contact information

Webpage: <https://intrinsic.eu/>

Connected Educator: <https://intrinsic.eu/ce>

Facebook: <https://www.facebook.com/INTRINSIC.EU>

Linkedin Group - INTRINSIC: Empowering HE for
INnovative educaTION foR sustalnable eNtrepreneurShip
In Life sCiences

<https://www.linkedin.com/groups/8719364/>

Twitter: @INTRINSIC_EU

Coordinator: DI Dr. Andreas Zitek, MSc

University of Natural Resources and Life Sciences Vienna

andreas.zitek@boku.ac.at, +43676 780 65 15



Erasmus+

The INTRINSIC project is co-funded by the ERASMUS+ program of the European Union under grant no. **2018-1-AT01-KA203-039303**.



The INTRINSIC TEAM



Erasmus+

The INTRINSIC project is co-funded by the ERASMUS+ program of the European Union under grant no. **2018-1-AT01-KA203-039303**.